

DUREX PRODUCTS
SCREEN MEDIA:

**KEEPING YOU IN-SPEC
AND UP TO SPEED.**

DUREX PRODUCTS, INC. — SCREEN MEDIA, LINERS, WEAR PARTS, AND ACCESSORIES FOR AGGREGATE, MINING, RECYCLE, AND INDUSTRIAL INDUSTRIES

YOUR BEST BET FOR INNOVATION AND QUALITY

At Durex, we have offered innovative screen media technologies to the aggregate, mining, recycling, and industrial industries since 1965. Our wire cloth screens form the foundation for a full line of premium screen products that today includes our renowned Livewire®, Armor®, Accuslot®, Vibraspan®, and Vibraclean® screens, as well as urethane and rubber modular screen panels and aggregate equipment wear liners and screen accessories.

There is a reason that aggregate producers and mining companies have relied on Durex wire cloth screens for decades. Our wire screen media is made of high-quality oil-tempered, stainless, or high-carbon steel. It delivers long life, minimal downtime, and low cost per ton.

In addition to high-performance raw materials, Durex uses advanced tooling and production machinery to ensure accurate openings and tight weaves. Our production personnel have the experience and knowledge needed to produce precise, long-lasting screen media. The workmanship also extends to screen panel finishing. Each Durex wire screen is sheared to customer-requested specifications. We complete the screens by fabricating edges based on OEM specs.

DESIGNED AND BUILT TO MATCH YOUR APPLICATION

Durex also offers a complete line of modular urethane and rubber screen panels and accessories. Our urethane and rubber screens provide long wear life, superior performance, low cost per ton, and noise reduction. We offer a number of panel fastening options, and we can fully design and build urethane screens to match your application.

Specialized polymer formulas, combined with our experience in precision, open-cast manufacturing processes, result in urethane screening products that provide unmatched quality and performance. Our urethane screen media delivers outstanding efficiency and wear life in even the harshest conditions.

The entire Durex team is as proud of our expertise as we are of our screens. Our production specialists and field representatives partner to provide hands-on, customized solutions to customers' problems. We share our knowledge to help customers achieve their highest production, minimize downtime, and increase revenues. Aggregate, mining, recycle, and industrial companies throughout the world count on Durex to improve their efficiency and lower their operating costs.

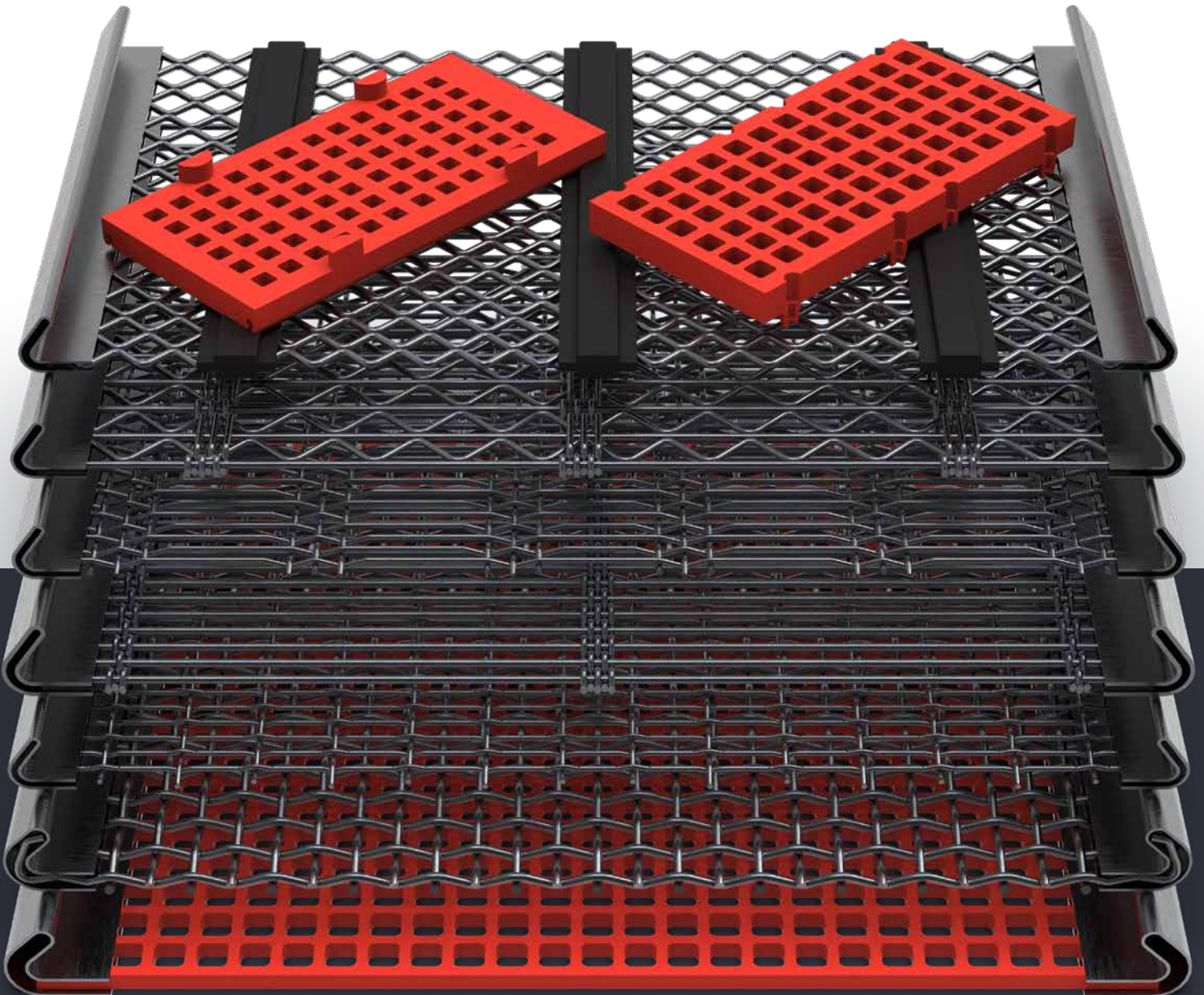




DUREX
PRODUCTS, INC.

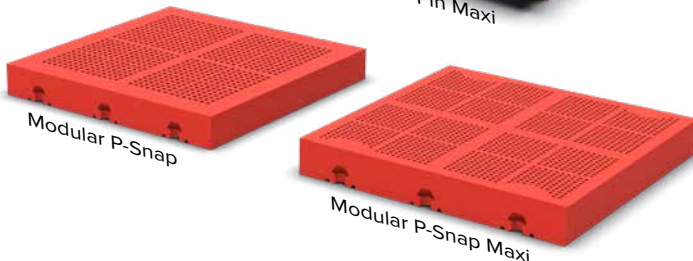
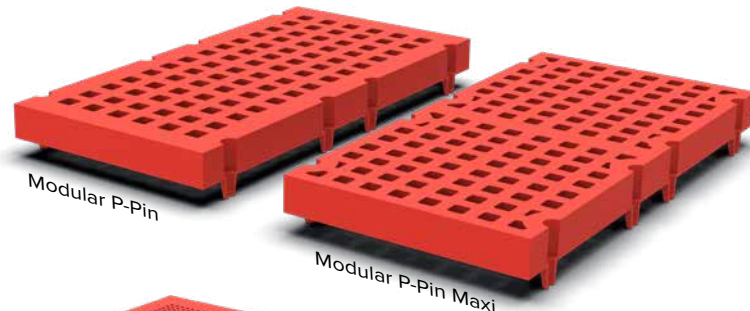
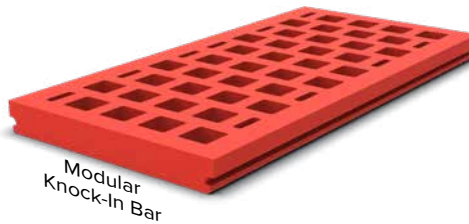
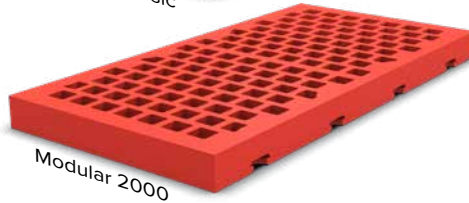
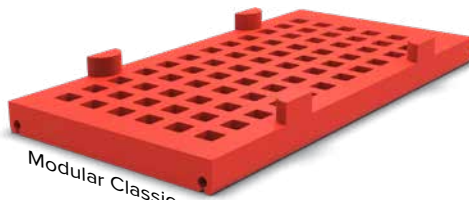
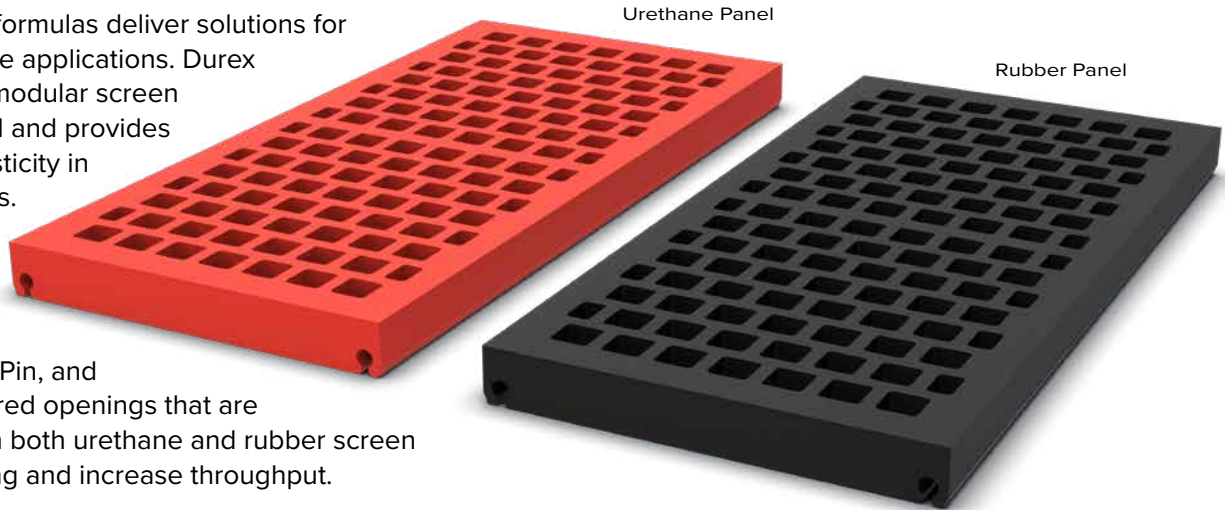
TABLE OF CONTENTS

About Us	2-3
Modular Urethane and Rubber Screens	4
Woven Wire Screens	5
Self-Cleaning Wire Screens.....	6
Side-Tensioned Screens	7
Large-Opening Screens	8
Specialty Screens.....	9
Screening Accessories	10-11



MODULAR URETHANE AND RUBBER SCREENS

Specialized urethane formulas deliver solutions for high-wear and abrasive applications. Durex urethane and rubber modular screen media is easy to install and provides long wear life and elasticity in dry or damp conditions. Urethane and rubber screen media panels are available in Modular Classic, 2000, Knock-In Bar, P-Pin, and P-Snap systems. Tapered openings that are wider at the bottom, in both urethane and rubber screen media, reduce plugging and increase throughput.



WHY URETHANE?

- **Long Wear Life:** Polyurethane is ideal for highly abrasive dry or wet applications, providing much longer wear life than traditional wire screen media.
- **Exceptional Performance:** Our formulas offer excellent fine particle sliding and large rock impact absorption for increased screening efficiency.
- **Low Cost Per Ton:** Long life plus great productivity leads to significant reduction in total operating costs.

WHY RUBBER?

- **Long Wear Life:** Rubber is excellent in abrasive or high-impact applications, such as pre-screening large material or in feeds with considerable drop height.
- **Noise Reduction:** Rubber screens are known for their ability to dramatically reduce noise, making them an optimal choice for pre-screening, scalping, or primary screening.
- **Excellent Production:** Resistance to plugging, along with less downtime from longer wear life, leads to increased production.

MODULAR WIRE SCREENS

Durex also offers modular wire screens in 1-ft x 1-ft and 1-ft x 2-ft panels, with a variety of wire opening size options, including square, rectangular, slotted, Livewire®, and wedge wire. These panels are designed to fit flat-surface screen decks that traditionally use polyurethane or rubber panels. Modular Wire Screens provide more open area than traditional modular panels.



WOVEN WIRE SCREENS

Made of high-quality oil-tempered, stainless or high-carbon steel, Durex woven-wire screen allows the use of lighter-gauge wire, while still providing excellent wear life.

SQUARE OPENING AND MESH

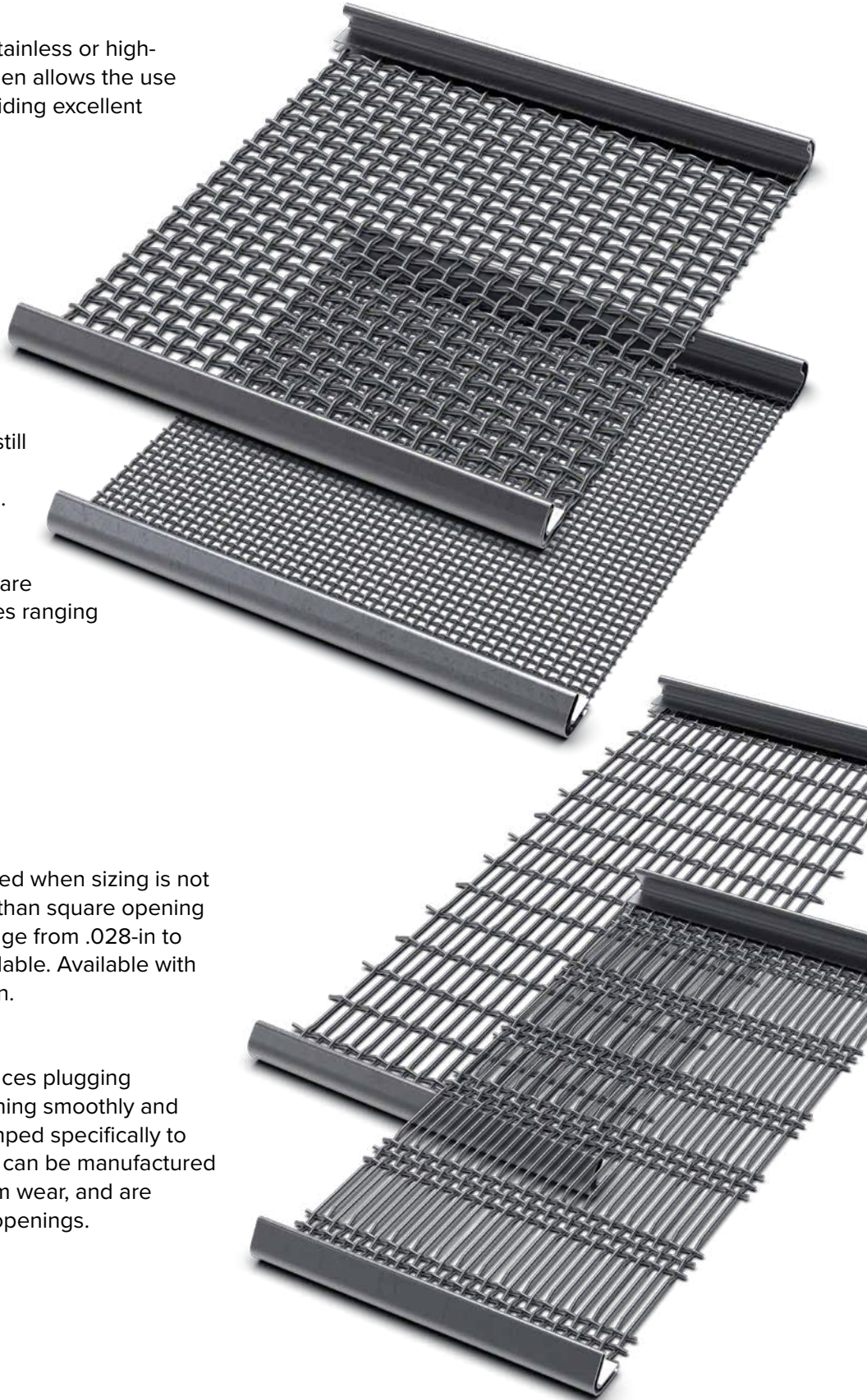
Square woven-wire cloth allows the use of lighter-gauge wire, while still providing excellent wear life, for less downtime and lower operating costs. Square openings are available from .078-in to 8-in, with wire diameters available from .041-in to .625-in. Square mesh screen cloth is available in sizes ranging from 2 mesh down to 100 mesh.

RECTANGULAR OPENING

Rectangular opening wire cloth is used when sizing is not as critical. It offers more throughput than square opening wire cloth. Rectangular openings range from .028-in to 3-in, with custom openings also available. Available with wire diameters from .041-in to .500-in.

LONG SLOT TRIPLE SHOOT

Long slot triple shoot wire cloth reduces plugging and blinding to keep operations running smoothly and efficiently. Long slot screens are crimped specifically to provide better sizing accuracy. They can be manufactured in a “flat-top” weave for more uniform wear, and are available in a wide range of slotted openings.





SELF-CLEANING WIRE SCREENS

Self-cleaning screens offer effective solutions to blinding, plugging, and pegging issues. Durex self-cleaning screens include Livewire®, Accuslot®, Vibraspan®, and Vibraclean® screens.

1. LIVEWIRE®

Livewire® is a self-cleaning screen featuring molded rubber strips that hold high-strength wires in place. Providing better screening action than traditional woven wire and greater open area than polyurethane, this screen media is designed to boost production by reducing costly, time-consuming blinding and pegging problems, while also delivering superior wear life. It is available in Accuslot®, Diamond, Herringbone, and Straight wire slot openings for maximum output in a variety of dry or wet applications.

2. ACCUSLOT®

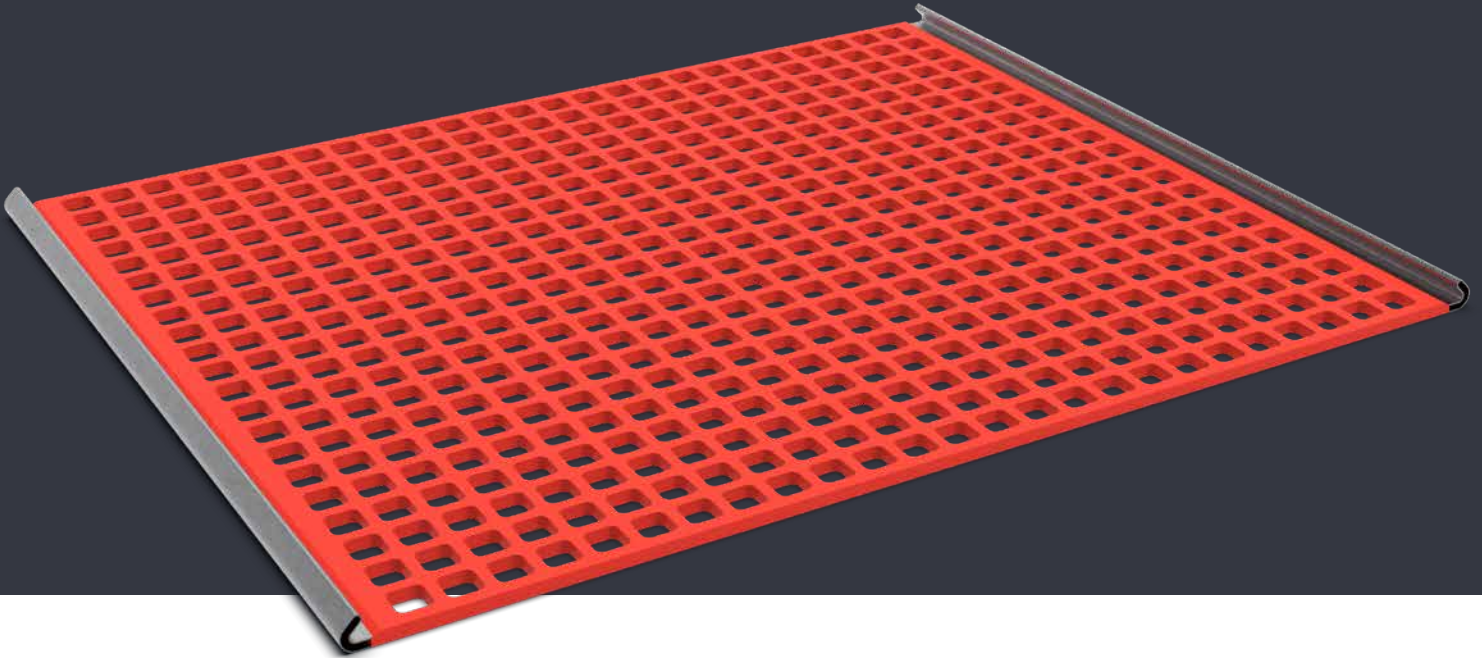
Accuslot® screens provide the accuracy of square openings with the production efficiency and cleaning ability of long slot wire cloth. Accuslot® screens help to reduce plugging and/or blinding, while minimizing the passing of slivers and chips. Clusters of wires can be 6-in or match buckler bars. Various openings are available.

3. VIBRASPAN®

Vibraspan® screens provide high open area and increased slot lengths to increase product throughput and maintain sizing. Vibraspan® screens are available in two types of weaves. Straight wire screens allow for increased tensioning on the wires and have higher load capacities. Intercrip screens have crimped wires for tensioning, which allows the screen to be self-cleaning by passing near-sized particles while reducing blinding. Due to the long slot, Vibraspan® screens will pass more slivered material when compared to other woven screen designs.

4. VIBRACLEAN®

Vibraclean® screens combine the traditional Vibraspan® screen types by alternating crimped and straight wires. This allows increased load capacity over a traditional intercrip by tensioning the straight wires, while maintaining the self-cleaning feature of the crimped wires. Like Vibraspan® screens, these screens are ideal for applications requiring high throughput and cleaning of debris, but will they pass more slivered material compared to other woven screen designs.



SIDE-TENSIONED SCREENS

Side-tensioned solutions from Durex include Armor®, Cable-Reinforced, and Perforated-Plate Screens.

ARMOR®

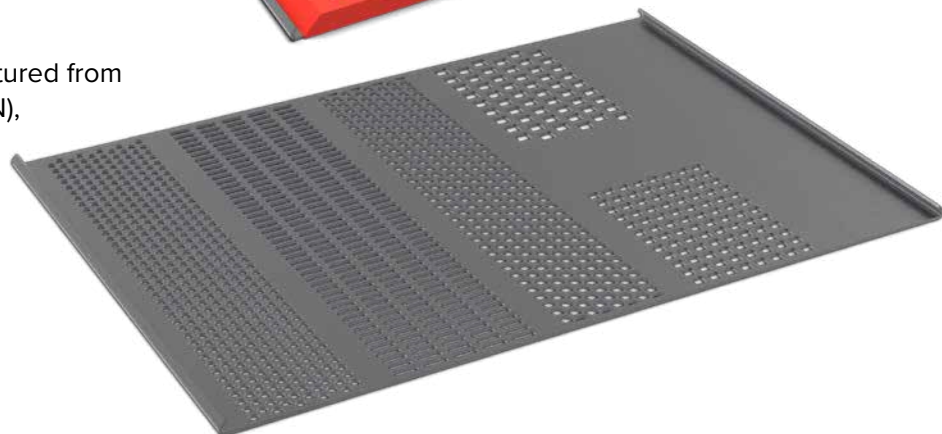
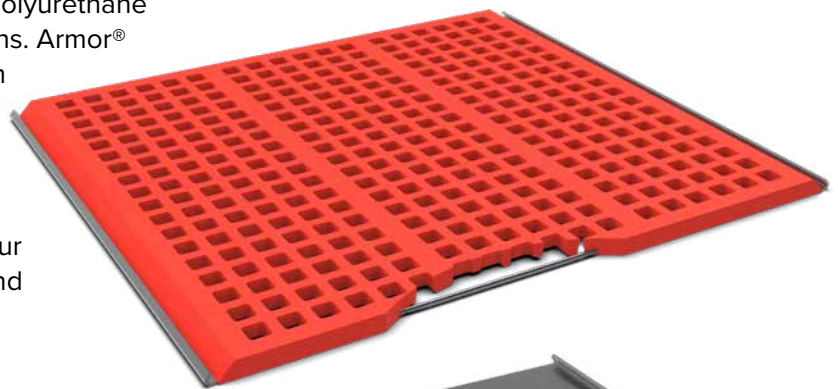
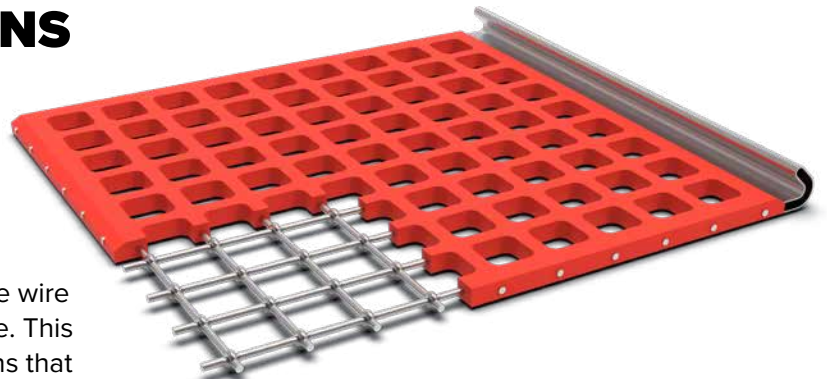
Armor® tensioned screens are built from high-grade wire cloth with molded open-cast premium polyurethane. This unique combination of technologies creates screens that have a much higher open area than conventional polyurethane screens and much longer wear life than wire screens. Armor® screens are ideal for wash plants in light to medium load applications with highly abrasive wear.

CABLE-REINFORCED (TYPE C)

Cable-reinforced screens comprise multiple steel cables molded into a urethane or rubber screen. Our design ensures high strength, impact resistance, and long wear life.

PERFORATED OR FLAME-CUT PLATE

Perforated and flame-cut plate are manufactured from high-quality steel alloy plates (250-500 BHN), featuring regularly spaced square, round, slotted, or hexagonal perforations of various sizes, depending on application. This screen is ideal for high-impact and heavy-abrasion applications.

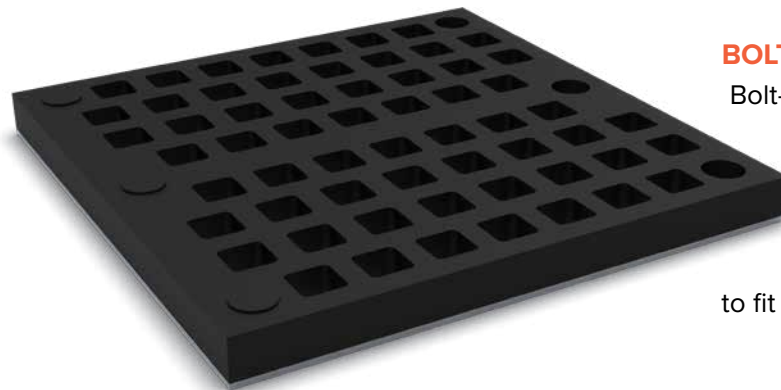
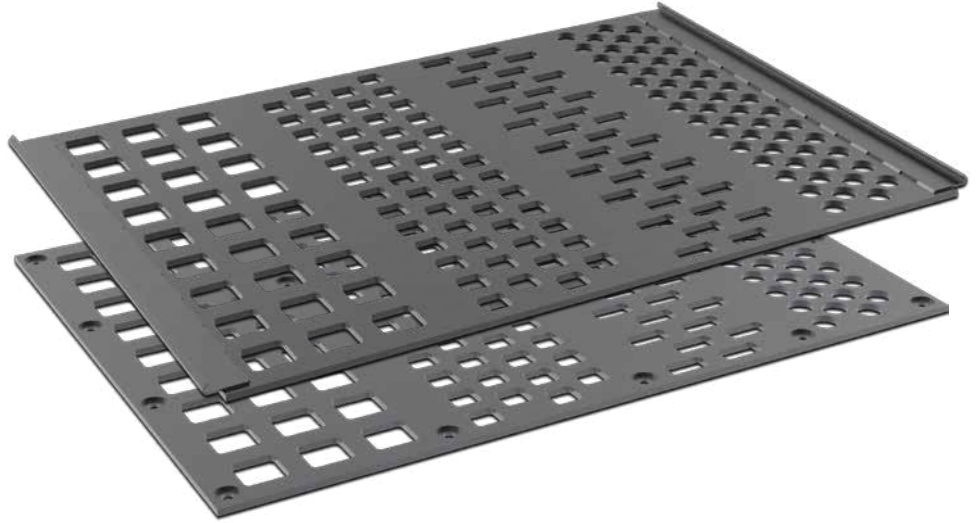


LARGE-OPENING SCREENS

Large-opening screens are often required in extreme scalping, primary, and high-tonnage applications, especially where there is heavy impact and/or a great deal of abrasive material.

FLAME-CUT PLATE

Flame-cut plate features square, round, hexagonal, and slotted openings that are cut into steel plate, rather than perforation. This design is excellent for top- and sometimes middle-deck applications where impact and abrasion resistances are required. We offer flame-cut plate with BHN hardness of up to 450 or 500 for superior wear life.

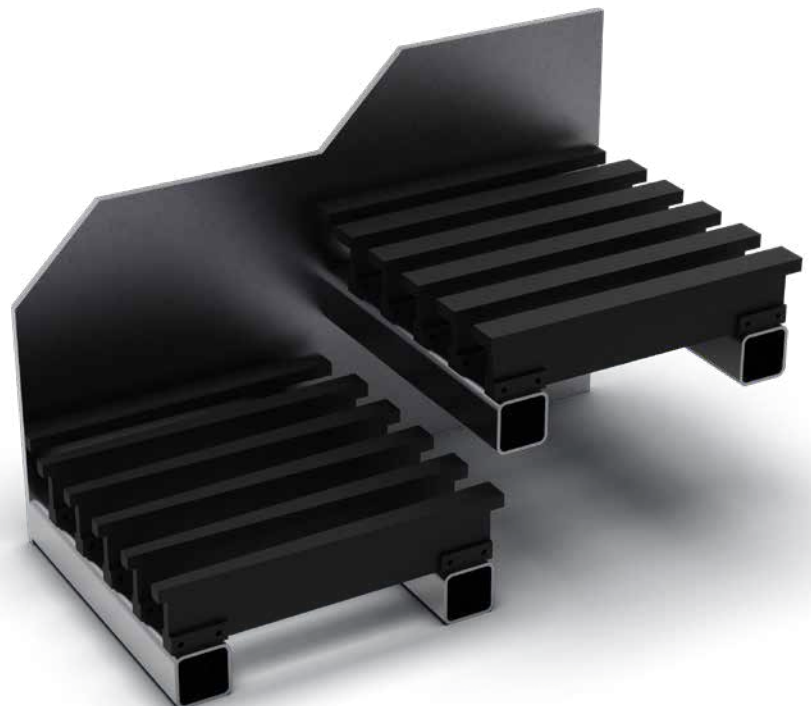


BOLT-DOWN RUBBER

Bolt-down rubber screens are designed for excessively harsh conditions in scalping applications. They provide a combination of long wear life and high throughput. Tapered openings that are wider at the bottom reduce plugging. Opening sizes and bolt hole locations can be customized to fit different screening machines.

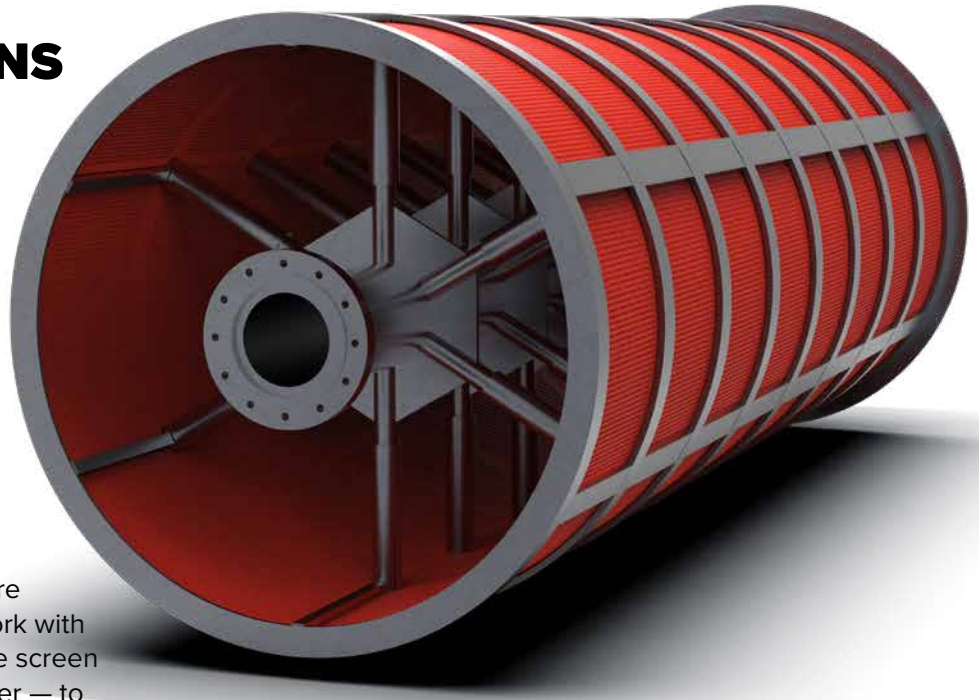
GRIZZLY AND IMPACT BARS

Grizzly and impact bars remove large, oversized material in scalping and/or primary screening. Our grizzly and impact bars are manufactured from a field-tested rubber compound or high-impact steel.



SPECIALTY SCREENS

Screening performance relies on quality design. Our years of experience and wide range of material and screen design options allow us to fully evaluate our customers' needs and offer specialty solutions that provide superior performance and lower operational costs.

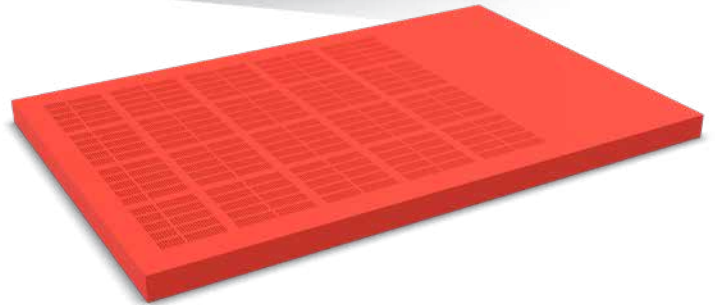


TROMMELS

Because trommel and rotary screens are used in a variety of applications, we work with you to design and build the appropriate screen media — in wire, polyurethane, or rubber — to suit your unique requirements.

INTERNALLY FRAMED (TYPE D)

Our internally framed screens are custom designed, based on your needs. These screens bolt or clamp into the screen structure.



CURVED SIEVE SCREENS

Available in stainless steel wedge wire or polyurethane, our curved sieve screens are designed to maximize sieve performance and dewatering. Standard openings range from 0.3 mm up to 2 mm. Curved urethane sieve screens are reversible and weigh less than wedge wire.



CUSTOM DESIGNS

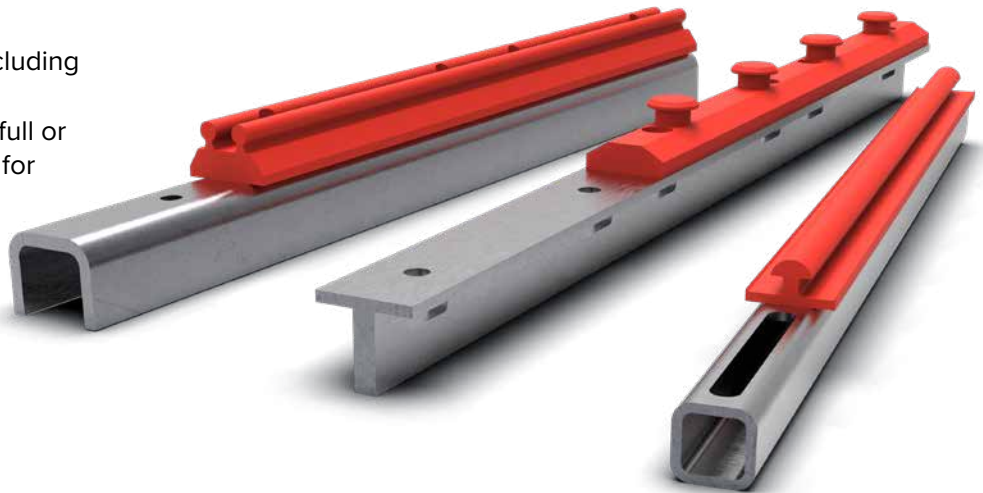
With our practical experience in the aggregate, mining, recycle, and industrial industries, we can devise custom-built screens that fit your special needs. Our trained representatives will analyze your field problems and work with our applications engineering department to design and recommend the ideal product for your application.

SCREENING ACCESSORIES

Durex offers a number of screen accessories that provide long-term solutions for your equipment. Choose from standard options, or we can design and build you a custom solution. Our accessories made from steel, urethane, and rubber deliver outstanding efficiency and wear life. They are lightweight and corrosion-resistant.

STRINGERS

Steel or urethane in several styles, including steel-reinforced and non-reinforced U-channels, urethane non-reinforced full or split U-channels, and knock-in type N for our Modular Classic panels. Wet applications require urethane non-reinforced full or split U-channels. Steel T-stringers or C-channel stringers are available for Modular 2000 system.



HOLD-DOWN COMPONENTS

Bolts used with urethane or rubber donuts to secure screen media to crown bars, reducing wear.

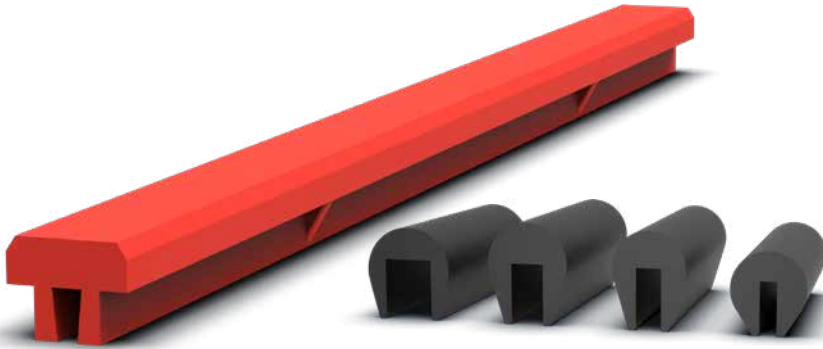
SIDE-TENSION RAILS

Steel, urethane, or rubber wear-resistant rails help hold proper tension to increase screen media wear life.



TENSION WEDGE ASSEMBLY

Holds tension rails in place.

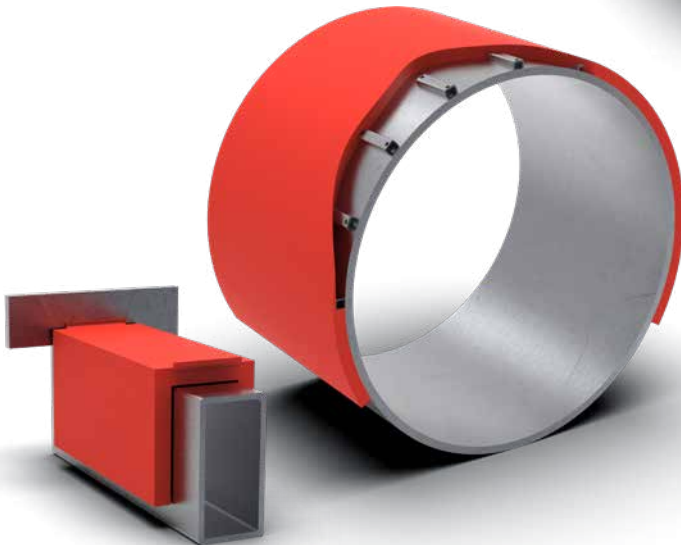
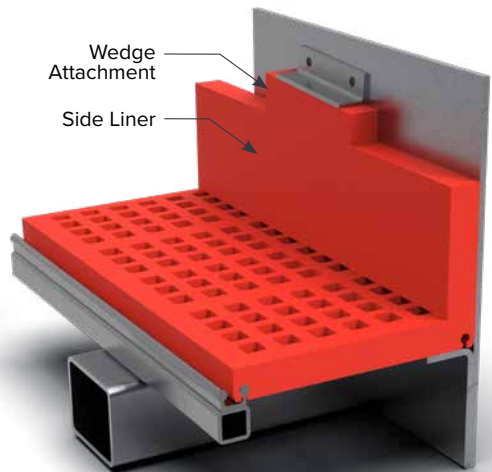


CHANNEL RUBBER OR URETHANE BUCKER BAR COVERS

These protect bucker bars from wear and allow proper tensioning of screen media. Urethane bucker bar covers are available up to 6-ft.

SIDE LINERS AND WEDGES

Urethane or rubber side liners can be manufactured for all modular systems. Wedges are used to hold down the side liners.

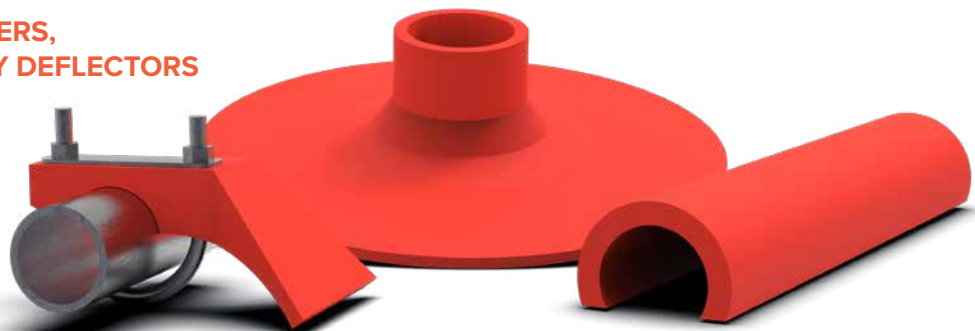


CROSS SUPPORT AND ECCENTRIC SHAFT COVERS

Cross support covers install over the cross support, between the bucker bars, to protect the cross support from falling material. Eccentric shaft covers are available in 1/2-in or 3/4-in thickness. We recommend 2/3 or full coverage of the shaft diameter.

SPRAY PIPE SEALS, COVERS, AND BEAVER TAIL SPRAY DEFLECTORS

Wear protection for wet screening applications.



ASK ABOUT OUR SCREEN MEDIA LINES

- **Woven Wire:** Square, Rectangular, Long Slot Triple Shoot, Mesh
- **Self-Cleaning Wire:** Livewire®, Accuslot®, Vibraspan®, Vibraclean®
- **Modular Urethane and Rubber:** Classic, 2000, Knock-in-Bar, P-Pin, P-Pin Maxi, P-Snap, P-Snap Maxi
- **Side-Tensioned:** Armor®, Cable-Reinforced, Urethane and Rubber, Perforated Plate
- **Large-Opening:** Flame-Cut Plate, Bolt-Down Rubber, Grizzly Bars

ASK ABOUT OUR LINERS AND ACCESSORIES

- **Magnetic, Plain, Plug-Weldable, and Bolt-On Liners:** Urethane, Rubber, Ceramic-Embedded
- **Accessories:** Side-Tension Rails, Tension Wedge Assembly, J-Bolts, U-Bolts, Donuts, Spray Pipe Seals, Profile Impact Pads, Stringers, Bucker Bar Covers, Skirt-Board Lining, etc. — Steel, Urethane, Rubber
- **Liners for Concrete Plants and Trucks:** Urethane, Urethane-Ceramic, Rubber-Ceramic

10/22

DUREX PRODUCTS, INC.

112 West First Avenue, Luck, WI 54853
customerservice@durexproducts.com
715-472-2111

www.durexproducts.com

