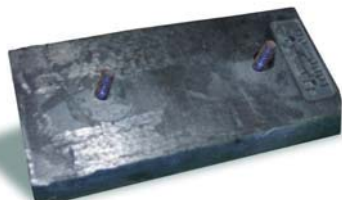




# ULTRA WEAR-RESISTANT SOLUTIONS

*Si-Tec® FOR HIGH ABRASION APPLICATIONS*



## Si-Tec® ULTRA WEAR-RESISTANT PRODUCTS:

- Increase Wear Life
- Reduce Maintenance Change-outs
- Fast, easy installation
- Reduced liner cost per ton of ore processed
- Universal shapes and sizes
- Custom shapes and sizes

## MINING APPLICATIONS

**SPOKANE INDUSTRIES** provides high quality, high performance wear parts for the mining and rock crusher industries. Using our patented ceramic composite technology and innovative product designs we feature **Si-Tec® Ultra Wear-Resistant** products that provide unequalled abrasion resistance, long wear life and ease of installation.

Many customers report that Si-Tec® Ultra-Wear Resistant products provide more than twice the life of standard parts. Reduce your operating and maintenance costs with increased wear life, fewer part change outs, increased safety and ease of installation.

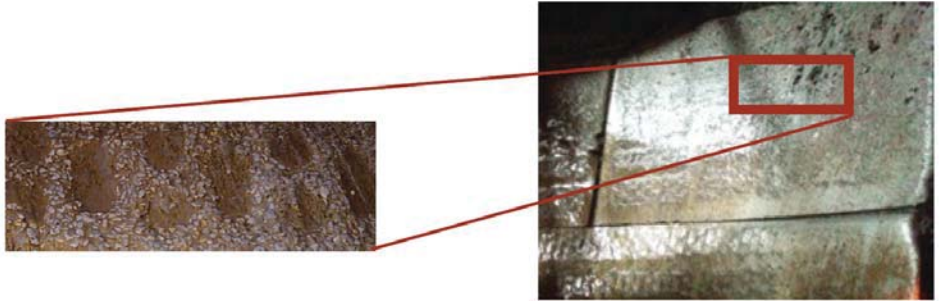
Our experienced engineering team will work with you to assess existing parts and high wear problems. We will recommend universal solutions and/or design custom solutions for your application that optimize wear life, make installation easier, while effectively managing costs.





## SPOKANE INDUSTRIES' PATENTED CERAMIC COMPOSITE TECHNOLOGY

**Si-Tec®** is a patented ceramic/high-chrome white iron composite that resists wear significantly longer than high-chrome white iron alone.



### UNIVERSAL-SIZE Si-Tec® COMPOSITES

In addition to custom chute liners, we offer an assortment of standard-size wear products.

Description	Part #	L x W x H (mm)	Weight (kg)	Hole Ctrs. (mm)	Bolt Hole qty/type/size
Edge Liner	109-3019FE	290 X 100 X 100	20.9	150	2, mill m24
Edge Liner	109-3018FE	294 X 135 X 132	27.3	150	2, std m20
Wear Plate	109-3011FE	300 X 300 X 40	25.5	150	2, mill m19
Wear Plate	109-3010FE	300 X 150 X 40	13.9	150	2, mill m19
Wear Plate	109-3017FE	356 X 356 X 40	38.6	203	4, taper m19
Skirt Board	110-0001FE	400 X 200 X 50	26.8	200	2, mill m19
Wear Bar	109-3012FE	457 X 178 X 38	20.5	356	2, hex m19
Wear Bar	110-0006FE	457 X 100 X 38	13.2	150	3, hex m20
Edge Liner	109-3020FE	590 X 100 X 100	43.2	225	3, mill m24
Wear Plate	109-3016FE	910 X 300 X 50	66.8	610	2, hex m19
Wear Plate	109-3021FE	297 x 203 x 50	21.8	152	2, mill m24
Wear Plate	109-3025FE	297 x 203 x 100	43.5	152	2, mill m24
Wear Plate	109-3015FE	300 x 300 x 40	24.9	150	4, mill m19
Wear Plate	109-3022FE	348 x 203 x 50	25.4	203	2, mill m24
Wear Plate	109-3023FE	348 x 203 x 100	50.8	203	2, mill m24
Wear Plate	109-3024FE	429 x 290 x 50	44.5	259 x 150	4, mill m24

#### TYPICAL APPLICATIONS:





- Chute Liners
- Skirt Board Liners
- Wear Plates
- Hanging Liners
- Deflector Plates
- Curtain Liners
- Ledge Liners
- Feeder Liners
- Middle Feed Liners
- Wear Bar









## Si-Tec<sup>®</sup> COMPOSITES

*for Extraordinary Wear Life*

Wear Solution	Example Products	Specifics
	<b>Skirt Boards:</b> used along conveyor lines to contain ore. Excellent resistance to sliding abrasion.	200 x 400 x 50 mm 26 Kg threaded studs - 0.625" bolt centers 200mm
	<b>Ball Mill Feed Liners:</b> these liners are quickly hung in shingle-like arrangements to protect feed chutes.	540 x 337 x 241 mm 84 Kg
	<b>Feed Hopper Apron:</b> long lasting liners protect feed hoppers from impact and abrasion of primary crusher feed.	430 mm wide, 40 mm thick and various lengths 72 Kg bolt holes: diameter 23 mm spacing: 220 mm
	<b>Feed Chute Liners:</b> our liners protect chutes from impact and sliding abrasion and are easily changed out with cast-in studs.	195 x 195 x 75 mm 21 Kg threaded studs - 0.625" bolt centers 130 x 130 mm





Wear Solution	Example Products	Specifics
	<b>Massive Chute Liners:</b> protect transfer points from both medium impact and severe sliding abrasion of 8 inch minus crusher feed. Typical ore volume : 75,000 tons/day.	custom sizes threaded holes for lifting eyes and fasteners
	<b>Loaf Liners:</b> provide protection to edges in high impact applications.	High-Chrome Iron 100 x 100 mm in various lengths bolt holes: diameter 23mm bolt spacing : 75 mm
	<b>Chute Liners:</b> our liners protect chutes from impact and sliding abrasion.	Composite 850 x 610 x 190 mm bolt spacing: 570 mm
	<b>Chute Liners:</b> our liners protect chutes from impact and sliding abrasion	Composite 850 x 610 x 125 mm bolt spacing: 570 mm



## ULTRA WEAR-RESISTANT SOLUTIONS

*FOR HIGH WEAR APPLICATIONS*

### HSI & VSI CRUSHER WEAR PARTS

#### Si-Tec® ULTRA WEAR-RESISTANT CERAMIC COMPOSITE PARTS:

- In most applications 2X the wear life
- Experienced engineering support
- Industry leading quality
- Fast delivery



**SPOKANE INDUSTRIES**, the industry leader in high quality, high chrome wear parts also features a full line of **Ultra Wear-Resistant** parts for HSI and VSI Impact Crushers manufactured using **Si-Tec®**, our patented Ceramic Composite Technology.

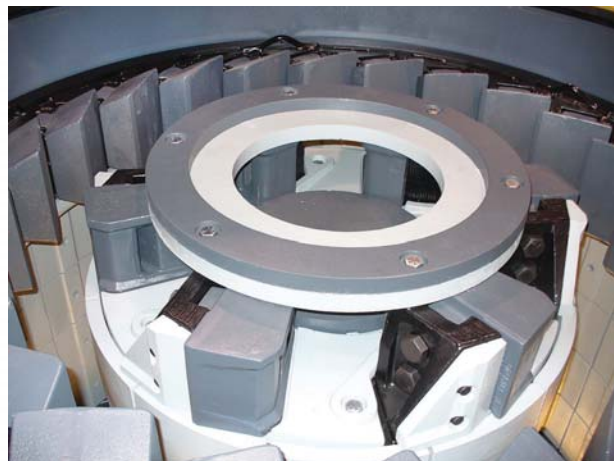
Our Si-Tec® Ultra Wear-Resistant parts provide **twice the wear life** of standard parts in most applications. That translates into higher aggregate production, fewer part change outs, and lower production costs.

When Si-Tec® is not required, our on shelf inventory of standard wear parts made with High Chrome Iron and specialized heat treat is available for fast delivery. Our standard parts are designed and manufactured for reduced breakage, increased wear life and uniform wear.

For both Si-Tec® Ultra Wear-Resistant and standard parts we maintain a large inventory to ensure that most orders can be filled the same day they are received.

Our sales representatives have experience with all types of impact crushers. They can assist you with appropriate replacement parts, unique parts for your application or provide advice on how to optimize your configuration for better performance.

To reduce your costs, take advantage of our High Chrome Iron buy back program.



*"Your Heavy Equipment Wear Parts Specialist"*



**Si-Tec® ULTRA  
WEAR-RESISTANT  
PARTS PROVIDE  
SIGNIFICANTLY  
LONGER WEAR LIFE:**

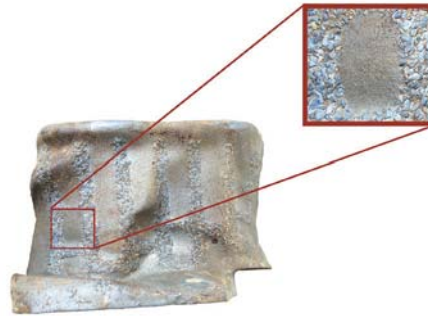
- Blow bars
- Feed disks
- Shoes
- Anvils

**ALSO TRY OUR STANDARD:**

- Wear plates
- Feed tubes
- Table liners
- Tables & anvil rings

## SPOKANE INDUSTRIES' PATENTED CERAMIC COMPOSITE TECHNOLOGY

**Si-Tec®** is a patented ceramic/high-chrome white iron composite that resists wear significantly longer than high-chrome white iron alone.



### Si-Tec® COMPOSITE SOLUTIONS

We offer Si-Tec® Composite Solutions for a variety of impact crushers:

#### HSI - Horizontal Shaft Impactor

CEC	Inertia	Kurtz
Cedarapids	Iroc	Nordberg
Eagle	Kleeman	Torgerson
Hazemag	Kobelco	Universal
Humbolt Wedag	Kohlberg-Pioneer	

#### VSI - Vertical Shaft Impactor

Canica	EL JAY	Remco
Cedarapids	ISC	Spokane
Cemco	Kohlberg-Pioneer	

### DESIGNED FOR SAFETY AND EASE OF INSTALLATION

Fastening Options:

1. Heli-coil cast in threads
2. Stob and wedge
3. Pin







## New Product Announcement

### SPOKANE 9311FE SI-TEC® CERAMIC ANVIL ISC 9311

**Increase the wear life one and a half times and more!**

At Spokane Industries, we have recently introduced a new ceramic composite version of our 9311 Anvil. By fortifying our high chrome iron with ceramic, wear life is increased by 1.5 times or more over standard high chrome iron.

The 9311FE Anvil delivers excellent performance in all applications, especially when paired with our ceramic shoes and feed disks. Try Si-Tec® today!

#### **BENEFITS**

- Safety first! Fewer hands will be in the crusher
- Longer Wear Life
- Fewer shutdowns
- Reduce maintenance hours
- Increase equipment run time

**Try our fortified anvils in your ISC 103!**



**Choose productivity and safety...Choose Si-Tec® Ceramic Composites**



## New Product Announcement

### SPOKANE 8317FE SI-TEC® CERAMIC ANVIL

#### Increase the wear life one and a half times!

Spokane Industries has recently introduced a new ceramic composite version of our 8317 Anvil. By fortifying high chrome iron with ceramic, wear life is increased by 1.5 times or more over standard high chrome iron.

The 8317FE Anvil delivers excellent performance in all applications, especially when paired with our ceramic shoes and feed discs.

#### BENEFITS

- Safety first! Fewer hands will be in the crusher
- Longer Wear Life
- Fewer shutdowns
- Save maintenance hours
- Increase equipment uptime

#### APPLICATIONS

Try our fortified anvils in your:

- Spokane Models 74 and 82
- ISC 82 and 77
- Cedarapids 2100
- Kolberg Pioneer 2500



#### New wear pattern!



**1.5x the Wear Life**

**Choose productivity and safety...Choose Si-Tec® Ceramic Composites**





## New Product Announcement

### SPOKANE 6311FE SI-TEC® CERAMIC ANVIL ISC 6311

**Increase the wear life one and a half times and more!**

At Spokane Industries, we have recently introduced a new ceramic composite version of our 6311 Anvil. By fortifying our high chrome iron with ceramic, wear life is increased by 1.5 times or more over standard high chrome iron.

The 6311FE Anvil delivers excellent performance in all applications, especially when paired with our ceramic shoes and feed discs. Try Si-Tec® today!

#### **BENEFITS**

- Safety first! Fewer hands will be in the crusher
- Longer Wear Life
- Fewer shutdowns
- Reduce maintenance hours
- Increase equipment run time

**Try our fortified anvils in your ISC 66!**



**1.5x the Wear Life!**



**Choose productivity and safety...Choose Si-Tec® Ceramic Composites**



## New Product Announcement

### SPOKANE 9155FE SI-TEC® CERAMIC FEED DISK ISC 9155

#### Increase the wear life by two or more times!

At Spokane Industries, we have recently introduced a new ceramic composite version of our 9155FE (OEM #10147A) Feed Disk. By fortifying our high chrome iron with ceramic, wear life is increased by 2 times or more over standard high chrome iron.

The 9155FE Feed Disk delivers excellent performance in all applications, especially when paired with our 9114FE Ceramic Shoes and 9311FE Anvils. Try Si-Tec® today!

#### BENEFITS

- Safety first! Fewer hands will be in the crusher
- Longer Wear Life
- Fewer shutdowns
- Reduce maintenance hours
- Increase equipment run time
- Better distribution of wear on shoes and anvils

Try our fortified feed disks in your ISC 103!

#### 2x the Wear Life!



Please contact Cutting Edge Supply for more information and a **free quote**:

Northern CA 800-375-6986 Colton, CA 800-949-9014 San Diego, CA 866-271-4402  
Arizona 800-729-1473 Nevada 702-649-1303

**Choose productivity and safety...Choose Si-Tec® Ceramic Composites**