



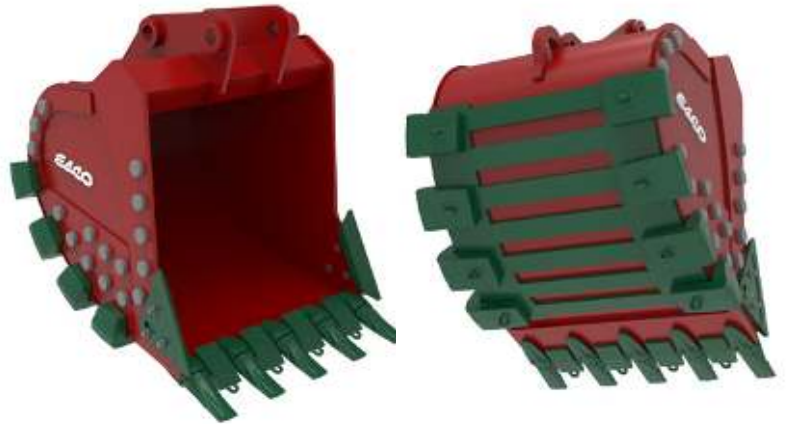
WEAR

ESCO®

Wear Materials
For Mining, Construction
and Aggregate Applications

ESCO® is the leading source for equipment wear protection.

Whether it is mining, construction or aggregate earthmoving machines or processing plants, ESCO has a wear protection option that is second to none. Our goal is to keep your equipment running with advanced protection to meet or exceed production goals while reducing maintenance and unplanned downtime.



ESCO Wear Protection

Machines / Buckets	Kwik-Lok® II Cast Wear Runners	Infinity® CWI Buttons & Blocks	ESCO Cast Corner Wear Shoes	ESCO AR400 & AR500 Plate	Infinity® Carbide Overlay Plate
Wheel Loaders / LHD	X	X	X	X	X
Excavators / Backhoes	X	X	X	X	X
Face Shovels	X	X	X	X	X
Cable Shovels	X	X	X	X	X
Draglines	X	X		X	X
Dozers / Scrapers	X	X		X	X

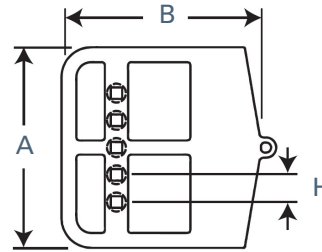
ESCO Wear Protection

Processing	Kwik-Lok® II Cast Wear Runners	ESCO AR400 & AR500 Plate	Infinity® Carbide Overlay Plate
Transfer Chutes	X	X	X
Conveyor Side Liners	X	X	X
Crusher Liner		X	
Strike Plates	X	X	
Crusher Feeder	X	X	

MaxDRP™ cast half-arrow edge segments for CAT machines

MaxDRP half-arrow edge segments are premium cast replacement parts for CAT wheel loaders. The part marking identification (PMID) is the same as the OEM part but may have additional wear metal (reference the thickness dimension).

NOTE: The illustration is only representative of the design. The actual part profile may vary and may have additional rows of bolt-holes. Machine model may vary dependent on how the lip is configured.



Cast Half-Arrow Edge Segments

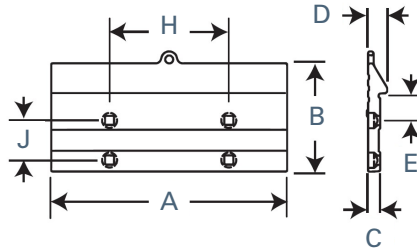
PMID	Replaces	Position	Machine Model	Length A		Width B		Thickness C		Arrow Height D		Hole Location E		Hole Spacing H		No. of Holes	Weight	
				mm	in	mm	in	mm	in	mm	in	mm	in	mm	in		kg	lb
4T6760DD	--	CTR	CAT 990, 992	416	16.38	533	21.00	60	2.38	95	3.75	177	6.97	90	3.54	4	97	213
4T6761DD	--	RH		432	17.02	533	21.00	60	2.38	95	3.75	177	6.97	100	3.94	4	104	230
4T6762DD	--	LH		432	17.02	533	21.00	60	2.38	95	3.75	177	6.97	100	3.94	4	104	230
109-9080	--	CTR	CAT 988	343	13.50	406	16.00	44	1.75	76	3.00	140	5.50	85	3.35	3	46	101
109-9081	--	RH		343	13.50	454	17.88	44	1.75	76	3.00	140	5.50	85	3.35	3	48	105
109-9082	--	LH		343	13.50	454	17.88	44	1.75	76	3.00	140	5.50	85	3.35	3	48	105
275-6055	275-5470	CTR	CAT 988, 990, 992	403	15.88	533	21.00	76	3.00	133	5.25	177	7.00	90	3.54	4	98	217
275-6056	275-5471	RH		428	16.83	533	21.00	76	3.00	133	5.25	177	7.00	100	3.94	4	108	238
275-6057	275-5472	LH		428	16.83	533	21.00	76	3.00	133	5.25	177	7.00	100	3.94	4	108	238
109-9030	--	CTR	CAT 994	441	17.35	635	25.00	76	3.00	148	5.75	254	10.00	85	3.35	5	151	332
117-6805*	--	RH		441	17.35	635	25.00	76	3.00	148	5.75	282*	11.11*	85	3.35	5	158	346
117-6806*	--	LH		441	17.35	635	25.00	76	3.00	148	5.75	282*	11.11*	85	3.35	5	158	346
109-9033	--	CTR	CAT 994	626	24.64	622	24.50	76	3.00	138	5.45	267	10.50	85	3.35	5	215	473
109-9031	--	RH		451	17.76	610	24.00	76	3.00	138	5.45	267	10.50	85	3.35	5	162	356
109-9032	--	LH		451	17.76	610	24.00	76	3.00	138	5.45	267	10.50	85	3.35	5	162	356
9W5734DD	--	CTR	CAT 980, 988	311	12.25	457	18.00	45	1.75	70	2.75	137	5.38	86	3.38	3	45	99
9W5737DD	--	RH		313	12.32	514	20.25	44	1.75	70	2.75	137	5.38	86	3.38	3	47	102
9W5730DD	--	LH		313	12.32	514	20.25	44	1.75	70	2.75	137	5.38	86	3.38	3	47	102

*Measurement at outside, holes are not parallel to lip edge

MaxDRP™ cast edge segments for CAT machines

MaxDRP edge segments are premium cast replacement parts for CAT wheel loaders. The part marking identification (PMID) is the same as the OEM part but may have additional wear metal (reference the thickness dimension).

NOTE: The illustration is only representative of the design. The actual part profile may vary and may have additional rows of bolt-holes. Machine model may vary dependent on how the lip is configured.



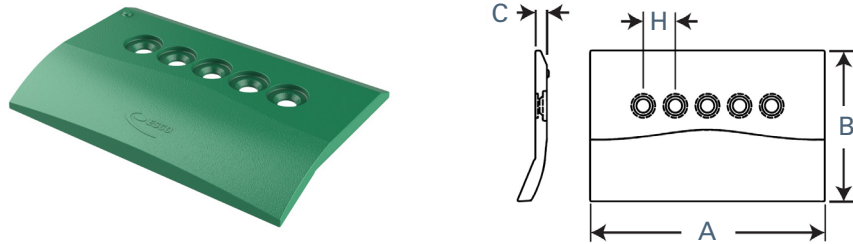
Cast Half-Arrow Edge Segments

PMID	Position	Machine Model	Length A		Width B		Thickness C		Arrow Height D		Hole Set Back E		Hole Spacing H		Hole Spacing J		No. of Holes	Weight	
			mm	in	mm	in	mm	in	mm	in	mm	in	mm	in	mm	in		kg	lb
217-4725	CTR	CAT 980, 982, 988	931	36.65	426	16.80	48	1.89	76	2.98	106	4.20	470	18.51	156	6.16	4	143	315
217-4727	CTR		961	37.83	426	16.80	48	1.89	76	2.98	106	4.20	486	19.13	156	6.16	4	148	326
439-1716	CTR		1012	40.00	426	16.80	48	1.89	95	3.74	108	4.25	511	20.12	156	6.16	4	135	299
217-4726	END		262	10.31	468	18.42	48	1.89	76	2.98	106	4.20	85	3.35	78	3.07	6	38	82
132-1034	CTR	CAT 950, 962	768	30.25	302	11.89	38	1.50	57	2.26	81	3.19	387	15.25	--	--	2	50	110
135-9666	CTR		823	32.40	302	11.89	38	1.50	57	2.26	81	3.19	414	16.31	--	--	2	54	119
132-1033	END		213	8.38	368	14.50	44	1.72	63	2.50	81	3.19	--	--	68	2.69	3	22	47
1U-0593HA	CTR	CAT 960, 970, 972	854	33.60	389	15.33	44	1.75	72	2.83	102	4.02	428	16.85	147	5.80	4	103	227
100-6668HA	CTR	CAT 966, 972	902	35.50	392	15.41	44	1.75	72	2.83	102	4.02	454	17.88	150	5.89	4	105	231
3G6395HAR	RH		243	9.58	402	15.84	44	1.72	75	2.94	103	4.07	--	--	76	2.98	3	31	67
3G6395HAL	LH		243	9.58	402	15.84	44	1.72	75	2.94	103	4.07	--	--	76	2.98	3	31	67

MaxDRP™ cast top cover plates for CAT machines

MaxDRP edge top cover plates are premium cast replacement parts for CAT wheel loaders and excavators. The part marking identification (PMID) is the same as the OEM part.

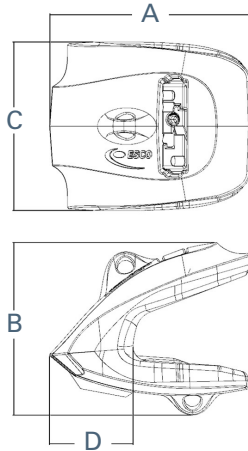
NOTE: The illustration is only representative of the design. The actual part profile may vary and may have additional rows of bolt-holes. Machine model may vary dependent on how the lip is configured.



Cast Top Cover Plates

PMID	Position	Machine Model	Length A		Width B		Thickness C		Hole Spacing H		No. of Holes	Weight	
			mm	in	mm	in	mm	in	mm	in		kg	lb
Wheel Loaders													
195-7096	CTR	CAT 988, 990, 992	406	16.00	243	9.57	25	1.00	90	3.54	4	18	39
195-7097	RH		438	17.24	247	9.72	25	1.00	90	3.54	4	21	44
195-7098	LH		438	17.24	247	9.72	25	1.00	90	3.54	4	21	44
195-7180	CTR	CAT 980, 988	343	13.50	205	8.06	32	1.25	86	3.39	3	15	32
195-7181	RH		343	13.50	205	8.06	32	1.25	86	3.39	3	16	33
195-7182	LH		343	13.50	205	8.06	32	1.25	86	3.39	3	16	33
307-5600	CTR	CAT 993	406	16.00	315	12.40	29	1.14	90	3.54	4	27	58
307-5601	RH		406	16.00	314	12.35	28	1.10	100	3.95	4	27	59
307-5602	LH		406	16.00	314	12.35	28	1.10	100	3.95	4	27	59
325-6677	CTR	CAT 994	620	24.42	398	15.67	31	1.20	85	3.34	5	54	118
325-6678	RH		442	17.39	387	15.24	29	1.15	85	3.34	5	37	83
325-6679	LH		442	17.39	387	15.24	29	1.15	85	3.34	5	37	83
195-7230	CTR	CAT 994	441	17.35	334	13.16	37	1.45	85	3.34	5	38	82
195-7231	RH		441	17.35	374	14.73	37	1.45	85	3.34	5	42	90
195-7232	LH		441	17.35	374	14.73	37	1.45	85	3.34	5	42	90
Excavators													
353-0157	CTR	CAT 994	343	13.50	205	8.06	25	1.00	86	3.39	3	13	28
353-0158	RH		343	13.50	205	8.06	25	1.00	86	3.39	3	13	29
353-0159	LH		343	13.50	205	8.06	25	1.00	86	3.39	3	13	29

Nemisys® lip and wing shrouds



Nemisys® Cable Shovel Lip Shrouds

PMID	Lock	Width		Length		Weight	
		mm	in	mm	in	kg	lb
N1SDSH322A	HP15	323	12.70	384	15.10	98	217
N1SDSH390	HPB-ASSY-1A	392	15.45	448	17.65	147	324
N3SDSH450	HPC-ASSY-2A	452	17.80	513	20.20	200	440

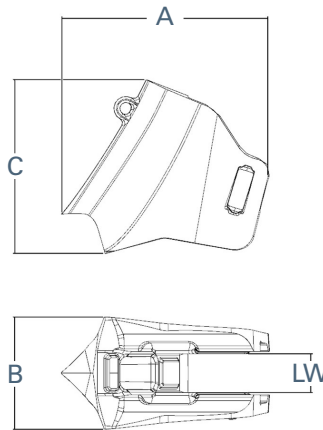
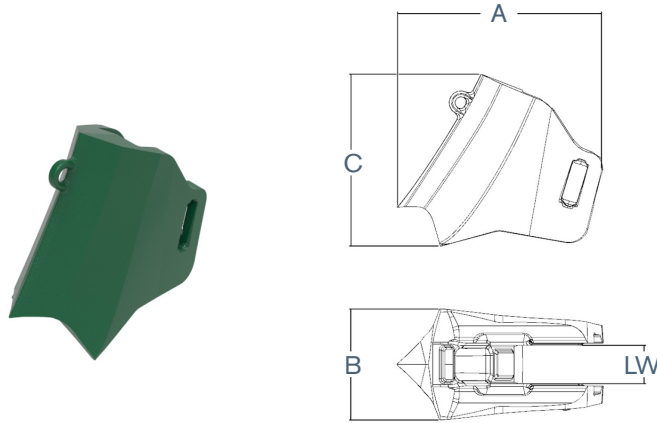


Plate Lip Wing Shrouds

PMID	Shroud Type	Wing Thickness A		Extension from Wing B		Shroud Width D		Weight		Pin	Boss
		mm	in	mm	in	mm	in	kg	lb		
N70LWS	Plate Lip Lower Wing	--	--	--	--	219	8.63	24	53	None	None
N95LWS-PW	Plate Lip Lower Wing	--	--	--	--	295	11.62	116	255	HP10	N1TB
N1LWS-PW5	Plate Lip Lower Wing	--	--	167	6.57	321	12.63	96	212	HPA	N1TB
N1LWS-PW3	Plate Lip Lower Wing	--	--	110	4.33	421	16.59	106	233	HPA	N1TB
NBW140X800	Plate Lip Upper Wing	140	5.50	201	7.90	800	31.50	223	492	HP15 - Included	TBB
NLWS65-1	Plate Lip Lower Wing	65	2.55	106	4.19	194	7.62	67	147	HP15 - Included	TBB
NLWS75-1	Plate Lip Lower Wing	75	3.00	98	3.86	200	7.87	68	151	HP15 - Included	TBB
NLWS90-1	Plate Lip Lower Wing	90	3.55	113	4.46	236	9.30	66	146	HP15 - Included	TBB

Nemisys® lip and wing shrouds



Cast Lip Wing Shrouds

PMID	Shroud Type	Wing Thickness A		Extension from Wing B		Shroud Width D		Weight		Pin	Boss
		mm	in	mm	in	mm	in	kg	lb		
N95LWS-A	Cast Lip Lower Wing	--	--	--	--	300	11.80	114	251	HP10 - Included	N1TB
N1LWS	Cast Lip Lower Wing	--	--	109	4.28	500	19.67	129	284	HPA	N1TB
N3LWS-3	Cast Lip Lower Wing	--	--	114	4.48	461	18.13	113	250	HPA	N1TB
N3LWS-6	Cast Lip Lower Wing	--	--	132	5.19	501	19.73	129	284	HPA	N1TB
N5LWS-2	Cast Lip Lower Wing	--	--	129	5.08	503	19.80	136	300	HPA	N1TB
N5LWS	Cast Lip Lower Wing	--	--	178	6.99	519	20.42	156	343	HPA	N1TB
N7LWS-2	Cast Lip Lower Wing	--	--	148	5.82	496	19.53	145	320	HPA	N1TB

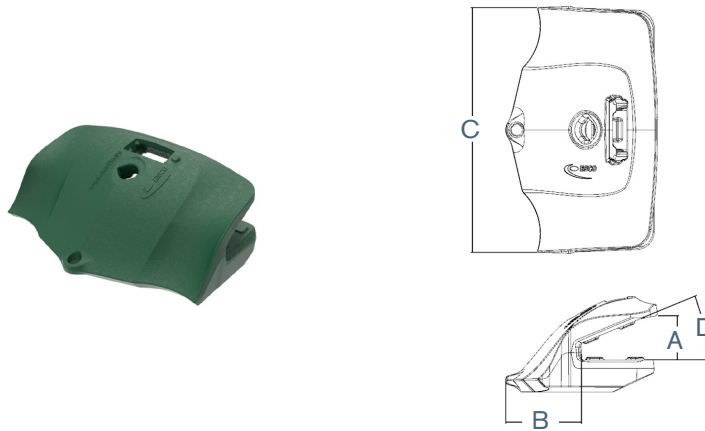
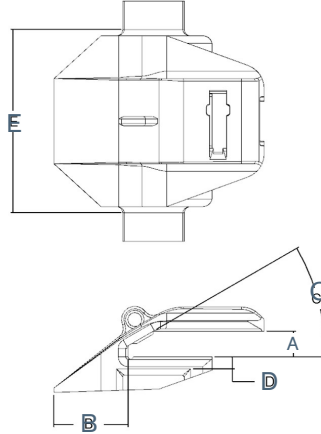


Plate Lip Shrouds

PMID	Shroud Type	Spade Angle	Lip Thickness A		Extension from Lip B		Ramp Angle C	Shroud Width		Weight		Boss	Pin Included
			mm	in	mm	in		mm	in	kg	lb		
NSH100X410-1L	Plate Lip	15	100	4.00	209	8.22	22.5	410	16.13	135	297	NSHB-1 / NSHB-2	HP15
NSH100X410-1R	Plate Lip	15	100	4.00	209	8.21	22.5	410	16.13	135	297	NSHB-1 / NSHB-2	HP15
NSH100X410-1	Plate Lip	0	100	4.00	215	8.46	22.5	410	16.13	134	295	NSHB-1 / NSHB-2	HP15
NSH100X480-1L	Plate Lip	22	100	4.00	202	7.94	22.5	480	18.90	158	348	NSHB-1 / NSHB-2	HP15
NSH100X480-1R	Plate Lip	22	100	4.00	202	7.94	22.5	480	18.90	158	348	NSHB-1 / NSHB-2	HP15
NSH100X500-1	Plate Lip	0	100	4.00	215	8.46	22.5	500	19.67	165	363	NSHB-1 / NSHB-2	HP15
NSH100X700-1	Plate Lip	0	100	4.00	215	8.46	22.5	700	27.55	235	517	NSHB-1 / NSHB-2	HP15

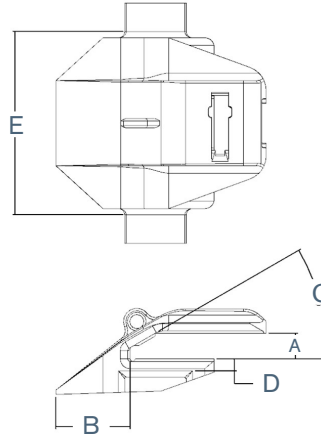
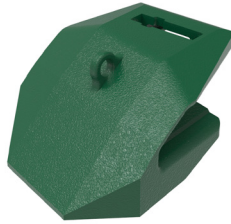
Toplok® lip shrouds



Lip Shrouds

PMID	Machine Type	Spade Angle	Lip Thickness A		Extension from Lip B		Ramp Angle C	Undercut Below Lip D		Shroud Width E		Weight	
			mm	in	mm	in		mm	in	mm	in	kg	lb
TAC50X285-1A	FEL	0	50	2.00	150	5.91	30	72	2.83	285	11.22	57	126
TEC50X290-4B	FEL	0	50	2.00	158	6.24	25	38	1.50	290	11.42	50	110
TEC50X310-3B	FEL	0	50	2.00	159	6.25	25	38	1.50	310	12.20	53	116
TEC50X310-4LB	FEL	10	50	2.00	159	6.25	25	38	1.50	310	12.20	50	110
TEC50X310-4RB	FEL	10	50	2.00	159	6.25	25	38	1.50	310	12.20	50	110
TEC50X330-4B	FEL	0	50	2.00	159	6.25	25	38	1.50	330	12.99	55	121
TEC50X330-8	FEL	0	50	2.00	121	4.76	25	40	1.57	330	12.99	42	93
TEC50X330-9L	FEL	10	50	2.00	121	4.76	25	40	1.57	330	12.99	43	95
TEC50X330-9R	FEL	10	50	2.00	121	4.76	25	40	1.57	330	12.99	43	95
TAC50X285-2L	FEL	13	50	2.00	150	5.91	30	69	2.71	285	13.58	58	128
TAC50X285-2R	FEL	13	50	2.00	150	5.91	30	69	2.71	285	13.58	58	128
TAC50X345-1B	FEL	0	50	2.00	105	4.13	30	55	2.17	345	13.58	42	92
TAC50X345-1C	FEL	0	50	2.00	150	5.91	30	72	2.83	345	13.58	64	140
TAC50X345-2LB	FEL	10	50	2.00	103	4.07	30	52	2.05	345	13.58	41	91
TAC50X345-2LC	FEL	13	50	2.00	150	5.91	30	72	2.83	345	13.58	64	140
TAC50X345-2RB	FEL	10	50	2.00	103	4.07	30	52	2.05	345	13.58	41	91
TAC50X345-2RC	FEL	13	50	2.00	150	5.91	30	72	2.83	345	13.58	64	141
TAC50X345-6	FEL	0	50	2.00	150	5.91	30	72	2.83	370	14.58	64	142
TAC50X345-8L	FEL	13	50	2.00	150	5.91	30	72	2.83	415	16.35	64	141
TAC50X345-8R	FEL	13	50	2.00	150	5.91	30	72	2.83	415	16.35	64	141
TEC50X420-5B	FEL	0	50	2.00	159	6.25	25	38	1.50	420	16.54	62	137
TAC50X345-5L	FEL	13	50	2.00	150	5.91	30	72	2.83	422	16.61	64	142
TAC50X345-5R	FEL	13	50	2.00	150	5.91	30	72	2.83	422	16.61	64	142
TAC50X470-1A	FEL	0	50	2.00	105	4.13	30	55	2.17	470	18.50	53	117
TAC50X345-7L	FEL	13	50	2.00	205	8.06	30	70	2.77	486	19.12	66	145
TAC50X345-7R	FEL	13	50	2.00	205	8.06	30	70	2.77	486	19.12	66	145
TAC50X345-3	FEL	0	50	2.00	150	5.91	30	72	2.83	499	19.65	65	143
TAC50X345-4L	FEL	13	50	2.00	150	5.91	30	72	2.83	499	19.65	66	145
TAC50X345-4R	FEL	13	50	2.00	150	5.91	30	72	2.83	499	19.65	66	145
TAC65X292-1	FEL	0	65	2.50	140	5.50	25	72	2.82	292	11.50	54	119
TAC65X292-2L	FEL	10	65	2.50	140	5.50	25	72	2.82	292	11.50	54	119
TAC65X292-2R	FEL	10	65	2.50	140	5.50	25	72	2.82	292	11.50	54	119
TAC65X340-3	FEL	0	65	2.50	164	6.46	25	71	2.81	340	13.38	67	147
TAC65X340-4R	FEL	0	65	2.50	164	6.46	25	71	2.81	340	13.39	68	150
TAC65X340-1	FEL	0	65	2.50	140	5.50	25	72	2.82	341	13.44	61	135
TAC65X340-2L	FEL	10	65	2.50	140	5.50	25	72	2.82	341	13.44	62	136
TAC65X340-2R	FEL	10	65	2.50	140	5.50	25	72	2.82	341	13.44	62	136
TAC65X340-4L	FEL	0	65	2.50	150	5.91	30	48	1.88	345	13.58	68	150
TAC65X350-1A	FEL	0	65	2.50	127	5.00	30	49	1.92	350	13.78	50	111
TAC65X355-2L	FEL	20	65	2.50	76	2.99	25	44	1.73	356	14.00	38	84
TAC65X355-2R	FEL	20	65	2.50	76	2.99	25	44	1.73	356	14.00	38	84
TAC65X355-1	FEL	0	65	2.50	76	2.99	25	44	1.73	375	14.75	35	78

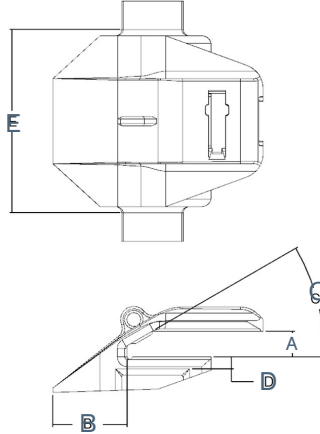
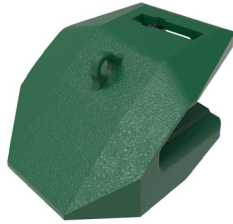
Toplok® lip shrouds



Lip Shrouds

PMID	Machine Type	Spade Angle	Lip A		Extension B		Ramp Angle	Undercut D		Shroud E		Weight	
			mm	in	mm	in		mm	in	mm	in	kg	lb
TAC65X380-1A	FEL	0	65	2.50	76	3.00	25	44	1.74	375	14.75	36	80
TAC65X380-2LA	FEL	20	65	2.50	76	2.99	25	44	1.74	380	14.96	40	88
TAC65X380-2RA	FEL	20	65	2.50	76	2.99	25	44	1.74	380	14.96	40	88
TAC65X385-1A	FEL	0	65	2.50	140	5.50	25	72	2.82	387	15.25	67	149
TAC65X385-2LA	FEL	10	65	2.50	140	5.50	25	72	2.82	387	15.25	68	150
TAC65X385-2RA	FEL	10	65	2.50	140	5.50	25	72	2.82	387	15.25	68	149
TAC65X385-6R	FEL	10	65	2.50	168	6.63	25	59	2.32	387	15.25	63	139
TAC65X410-1	FEL	0	65	2.50	164	6.46	25	71	2.81	410	16.14	76	168
TAC65X410-2L	FEL	14	65	2.50	164	6.46	25	66	2.58	410	16.14	76	168
TAC65X410-2R	FEL	14	65	2.50	164	6.46	25	66	2.58	410	16.14	76	168
TAC70X320-6	FEL	0	70	2.75	115	4.53	30	44	1.73	320	12.60	48	106
TAC70X320-6A	FEL	0	70	2.75	115	4.53	30	44	1.73	320	12.60	47	104
TAC70X320-7L	FEL	10	70	2.75	114	4.49	30	44	1.73	320	12.60	49	108
TAC70X320-7LA	FEL	10	70	2.75	115	4.53	30	44	1.73	320	12.60	48	105
TAC70X320-7R	FEL	10	70	2.75	114	4.49	30	44	1.73	320	12.60	49	108
TAC70X320-7RA	FEL	10	70	2.75	115	4.53	30	44	1.73	320	12.60	48	105
TAC70X360-5A	FEL	0	70	2.75	158	6.22	30	44	1.73	360	14.17	60	132
TAC70X360-6	FEL	0	70	2.75	115	4.53	30	44	1.73	360	14.17	53	116
TAC70X360-7L	FEL	10	70	2.75	113	4.46	30	44	1.73	360	14.17	53	117
TAC70X360-7R	FEL	10	70	2.75	113	4.46	30	44	1.73	360	14.17	53	117
TAC70X400-5A	FEL	0	70	2.75	158	6.22	30	44	1.73	400	15.75	65	144
TAC70X400-6	FEL	0	70	2.75	115	4.53	30	44	1.73	400	15.75	57	125
TAC70X400-7L	FEL	10	70	2.75	115	4.53	30	44	1.73	400	15.75	57	125
TAC70X400-7R	FEL	10	70	2.75	115	4.53	30	44	1.73	400	15.75	57	125
TAC70X400-8L	FEL	10	70	2.75	115	4.53	30	44	1.73	400	15.75	55	121
TAC70X400-8R	FEL	10	70	2.75	115	4.53	30	44	1.73	400	15.75	55	121
TAC70X400L-5A	FEL	0	70	2.75	158	6.22	30	44	1.73	400	15.75	64	142
TAC70X400R-5A	FEL	0	70	2.75	158	6.22	30	44	1.73	400	15.75	64	142
TAC70X450-1A	FEL	0	70	2.75	151	5.93	30	73	2.89	450	17.72	93	205
TAC70X450-2LA	FEL	10	70	2.75	151	5.93	30	73	2.89	450	17.72	95	209
TAC70X450-2RA	FEL	10	70	2.75	151	5.93	30	73	2.89	450	17.72	95	209
TAC70X415-3L	FEL	13	70	2.75	151	5.93	30	74	2.90	510	20.09	98	215
TAC70X415-3R	FEL	13	70	2.75	151	5.93	30	74	2.90	510	20.09	98	215
TAC70X450-5L	FEL	13	70	2.75	151	5.93	30	73	2.89	556	21.88	97	214
TAC70X450-5R	FEL	13	70	2.75	151	5.93	30	73	2.89	556	21.88	97	214
TAC70X415-1	FEL	0	70	2.75	151	5.93	30	65	2.57	606	23.84	92	202
TAC70X415-2L	FEL	13	70	2.75	151	5.93	30	74	2.90	606	23.84	98	217
TAC70X415-2R	FEL	13	70	2.75	151	5.93	30	74	2.90	606	23.84	98	217
TAC70X450-3	FEL	0	70	2.75	151	5.93	30	74	2.90	635	24.99	97	214
TAC70X450-4L	FEL	10	70	2.75	151	5.93	30	74	2.90	661	26.04	100	220
TAC70X450-4R	FEL	10	70	2.75	151	5.93	30	74	2.90	661	26.04	100	220

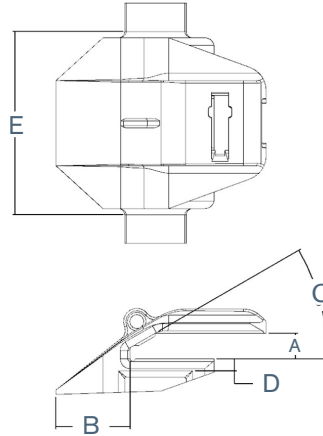
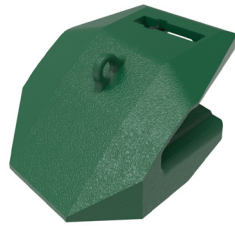
Toplok® lip shrouds



Lip Shrouds

PMID	Machine Type	Spade Angle	Lip A		Extension B		Ramp Angle	Undercut D		Shroud E		Weight	
			mm	in	mm	in		mm	in	mm	in	kg	lb
TAC75X430-3L	FEL	13	75	3.00	165	6.51	30	93	3.66	541	21.28	138	305
TAC75X430-3R	FEL	13	75	3.00	165	6.51	30	93	3.66	541	21.28	138	305
TAC75X430-1	FEL	0	75	3.00	165	6.51	30	93	3.66	651	25.62	138	304
TAC75X430-2L	FEL	13	75	3.00	165	6.51	30	93	3.66	651	25.62	142	312
TAC75X430-2R	FEL	13	75	3.00	165	6.51	30	93	3.66	651	25.62	142	312
TBC90X320-1	FEL	0	90	3.50	188	7.40	30	89	3.49	320	12.60	115	253
TBC90X385-1	FEL	0	90	3.50	188	7.40	30	89	3.49	385	15.16	132	292
TBC90X385-2L	FEL	10	90	3.50	188	7.40	30	89	3.49	385	15.16	134	295
TBC90X385-2R	FEL	10	90	3.50	188	7.40	30	89	3.49	385	15.16	134	295
TBC90X400-1	FEL	0	90	3.50	188	7.40	30	89	3.49	400	15.75	137	302
TBC90X400-2L	FEL	10	90	3.50	188	7.40	30	89	3.49	400	15.75	138	305
TBC90X400-2R	FEL	10	90	3.50	188	7.40	30	89	3.49	400	15.75	138	305
TBC90X435-1C	FEL	0	90	3.50	188	7.40	30	89	3.49	435	17.13	144	317
TBC90X435-2LC	FEL	10	90	3.50	188	7.40	30	89	3.49	435	17.13	146	321
TBC90X435-2RC	FEL	10	90	3.50	188	7.40	30	89	3.49	435	17.13	146	321
TBC100X410-10LA	FEL	10	100	4.00	166	6.54	30	73	2.87	410	16.14	135	298
TBC100X410-10RA	FEL	10	100	4.00	166	6.54	30	73	2.87	410	16.14	135	298
TBC100X410-5A	FEL	0	100	4.00	250	9.84	22.5	84	3.29	410	16.14	188	414
TBC100X410-6LA	FEL	15	100	4.00	250	9.84	22.5	98	3.86	410	16.14	188	414
TBC100X410-6RA	FEL	15	100	4.00	250	9.84	22.5	98	3.86	410	16.14	188	414
TBC100X410-7	FEL	0	100	4.00	189	7.45	30	87	3.43	410	16.14	156	345
TBC100X410-8L	FEL	14	100	4.00	189	7.45	30	87	3.43	410	16.14	160	352
TBC100X410-8R	FEL	14	100	4.00	189	7.45	30	87	3.43	410	16.14	160	352
TBC100X410-9A	FEL	0	100	4.00	166	6.54	30	73	2.87	410	16.14	135	298
TBC100X410-1B	FEL	0	100	4.00	166	6.54	30	72	2.84	413	16.25	113	249
TBC100X410-2LB	FEL	10	100	4.00	166	6.54	30	73	2.87	413	16.25	118	260
TBC100X410-2RB	FEL	10	100	4.00	166	6.54	30	73	2.87	413	16.25	118	260
TBC100X470-3	FEL	0	100	4.00	208	8.18	22.5	81	3.19	470	18.50	239	527
TBC100X470-4L	FEL	21	100	4.00	208	8.18	22.5	107	4.22	470	18.50	250	551
TBC100X470-4R	FEL	21	100	4.00	208	8.18	22.5	107	4.22	470	18.50	250	551
TBC100X515-2L	FEL	15	100	4.00	208	8.18	22.5	81	3.20	515	20.29	264	581
TBC100X515-2R	FEL	15	100	4.00	208	8.18	22.5	81	3.20	515	20.29	264	581
TBC100X555-1	FEL	0	100	4.00	208	8.18	22.5	81	3.19	555	21.85	279	616
TBC100X750-1	FEL	0	100	4.00	208	8.18	22.5	81	3.20	750	29.53	347	766
TBC120X445-1	FEL/HFS	0	120	4.75	252	9.91	30	89	3.50	445	17.50	152	335
TBC120X445-2LA	FEL/HFS	13	120	4.75	242	9.52	30	89	3.50	445	17.50	159	350
TBC120X445-2RA	FEL/HFS	13	120	4.75	242	9.52	30	89	3.50	445	17.50	159	350
TAC70X240-1B	HOE	0	70	2.75	115	4.53	30	35	1.38	240	9.45	33	72
TAC70X240-2L	HFS	14	70	2.75	99	3.91	30	29	1.13	240	9.45	38	83
TAC70X240-2R	HFS	14	70	2.75	99	3.91	30	29	1.13	240	9.45	38	83
TAC70X280-1A	HOE	0	70	2.75	122	4.80	30	52	2.06	280	11.02	44	97

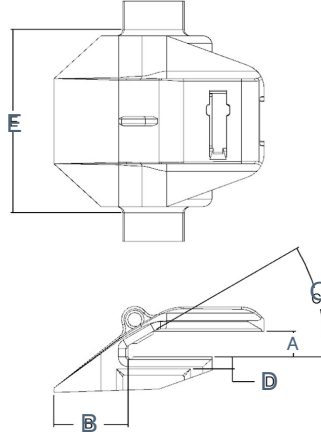
Toplok® lip shrouds



Lip Shrouds

PMID	Machine Type	Spade Angle	Lip A		Extension B		Ramp Angle	Undercut D		Shroud E		Weight	
			mm	in	mm	in		mm	in	mm	in	kg	lb
TAC70X280-2LA	HOE	14	70	2.75	122	4.80	30	52	2.06	280	11.02	45	99
TAC70X280-2RA	HOE	14	70	2.75	122	4.80	30	52	2.06	280	11.02	45	99
TAC80X240-1B	HFS	0	80	3.15	95	3.75	30	44	1.72	240	9.45	35	77
TAC80X250-1	HFS	0	80	3.15	130	5.12	30	57	2.24	250	9.84	48	106
TAC80X275-1	HFS	0	80	3.15	130	5.12	30	57	2.24	275	10.83	50	111
TAC80X305-3	HOE	0	80	3.15	130	5.12	30	57	2.25	305	12.01	54	119
TAC80X305-4L	HOE	14	80	3.15	130	5.12	30	57	2.25	305	12.01	54	119
TAC80X305-4R	HOE	14	80	3.15	130	5.12	30	57	2.25	305	12.01	54	119
TAC90X225-1	HFS	0	90	3.50	128	5.03	30	36	1.42	225	8.86	47	104
TAC90X245-1A	HFS	0	90	3.50	105	4.13	30	35	1.38	245	9.65	37	81
TAC90X245-2LA	HFS	22	90	3.50	105	4.13	30	35	1.38	245	9.65	37	81
TAC90X245-2RA	HFS	22	90	3.50	105	4.13	30	35	1.38	245	9.65	37	81
TAC90X270-5	HOE	0	90	3.50	130	5.12	30	60	2.36	270	10.63	57	125
TAC90X270-6L	HOE	14	90	3.50	128	5.04	30	60	2.36	270	10.63	58	127
TAC90X270-6R	HOE	14	90	3.50	128	5.04	30	60	2.36	270	10.63	58	127
TAC90X320-5	HOE	0	90	3.50	130	5.12	30	60	2.36	320	12.60	72	159
TAC90X320-6L	HOE	14	90	3.50	128	5.04	30	60	2.36	320	12.60	74	163
TAC90X320-6R	HOE	14	90	3.50	128	5.04	30	60	2.36	320	12.60	74	163
TAC90X360-1	HFS	0	90	3.50	128	5.03	30	37	1.46	360	14.17	73	160
TAC90X360-2L	HFS	14	90	3.50	128	5.03	30	36	1.42	360	14.17	74	164
TAC90X360-2R	HFS	14	90	3.50	128	5.03	30	36	1.42	360	14.17	74	164
TAC90X390-1L	HFS	14	90	3.50	128	5.03	30	36	1.42	390	15.35	81	179
TAC90X390-1R	HFS	14	90	3.50	128	5.03	30	36	1.42	390	15.35	81	179
TBC100X290-3A	HOE	0	100	4.00	150	5.92	30	64	2.50	290	11.42	87	192
TBC100X290-4LA	HOE	22	100	4.00	150	5.92	30	63	2.48	290	11.42	87	191
TBC100X290-4RA	HOE	22	100	4.00	150	5.92	30	63	2.48	290	11.42	87	191
TBC100X310-1A	HFS	0	100	4.00	145	5.70	30	45	1.77	310	12.20	99	219
TBC100X320-1A	HFS	0	100	4.00	145	5.70	30	45	1.77	320	12.60	91	200
TBC100X320-2LB	HOE/HFS	10	100	4.00	145	5.70	30	45	1.77	320	12.60	95	209
TBC100X320-2RB	HOE/HFS	10	100	4.00	145	5.70	30	45	1.77	320	12.60	95	209
TBC100X345-1L	HFS	14	100	4.00	142	5.59	30	40	1.57	345	13.58	106	234
TBC100X345-1R	HFS	14	100	4.00	142	5.59	30	40	1.57	345	13.58	106	234
TBC100X350-4LA	HFS	10	100	4.00	145	5.70	30	45	1.77	350	13.78	105	232
TBC100X350-4RA	HFS	10	100	4.00	145	5.70	30	45	1.77	350	13.78	105	232
TBC100X360-4LA	HFS	10	100	4.00	145	5.70	30	45	1.77	360	14.17	107	235
TBC100X360-4RA	HFS	10	100	4.00	145	5.70	30	45	1.77	360	14.17	107	235
TBC100X370-3A	HFS	0	100	4.00	145	5.70	30	45	1.77	370	14.57	97	213
TBC100X370-4LA	HFS	10	100	4.00	145	5.70	30	45	1.77	370	14.57	108	237
TBC100X370-4RA	HFS	10	100	4.00	145	5.70	30	45	1.77	370	14.57	108	237
TBC100X375-1L	HFS	22	100	4.00	125	4.92	30	44	1.73	375	14.76	102	224
TBC100X375-1R	HFS	22	100	4.00	125	4.92	30	44	1.73	375	14.76	102	224
TBC100X375-2	HFS	0	100	4.00	125	4.92	30	45	1.77	375	14.76	98	217

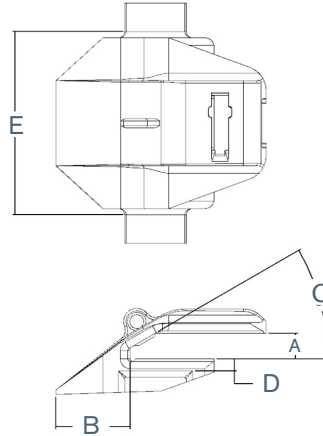
Toplok® lip shrouds



Lip Shrouds

PMID	Machine Type	Spade Angle	Lip A		Extension B		Ramp Angle	Undercut D		Shroud E		Weight	
			mm	in	mm	in		mm	in	mm	in	kg	lb
TBC100X375-3L	HFS	14	100	4.00	142	5.59	30	40	1.57	375	14.76	112	246
TBC100X375-3R	HFS	14	100	4.00	142	5.59	30	40	1.57	375	14.76	112	246
TBC100X375-4	HFS	0	100	4.00	125	4.92	30	63	2.48	375	14.76	112	248
TBC100X375-5L	HFS	22	100	4.00	125	4.92	30	63	2.48	375	14.76	117	257
TBC100X375-5R	HFS	22	100	4.00	125	4.92	30	63	2.48	375	14.76	117	257
TBC100X380-3A	HFS	0	100	4.00	145	5.70	30	45	1.77	380	14.96	98	216
TBC100X380-4LA	HFS	10	100	4.00	145	5.70	30	45	1.77	380	14.96	109	240
TBC100X380-4RA	HFS	10	100	4.00	145	5.70	30	45	1.77	380	14.96	109	240
TBC100X410-11	HOE	0	100	4.00	217	8.56	22.5	70	2.75	410	16.14	144	317
TBC100X410-3A	HFS	0	100	4.00	145	5.70	30	45	1.77	410	16.14	112	246
TBC100X410-4LA	HFS	10	100	4.00	145	5.70	30	45	1.77	410	16.14	112	248
TBC100X410-4RA	HFS	10	100	4.00	145	5.70	30	45	1.77	410	16.14	112	248
TBC100X430-1	HFS	0	100	4.00	125	4.92	30	45	1.77	430	16.93	104	229
TBC100X430-2L	HFS	22	100	4.00	125	4.92	30	44	1.73	430	16.93	107	236
TBC100X430-2R	HFS	22	100	4.00	125	4.92	30	44	1.73	430	16.93	107	236
TBC120X215-2LA	HFS	11	120	4.75	143	5.63	30	44	1.73	275	10.83	108	238
TBC120X215-2RA	HFS	11	120	4.75	143	5.63	30	44	1.73	275	10.83	108	238
TBC120X275-1LA	HFS	11	120	4.75	143	5.63	30	44	1.73	275	10.83	108	238
TBC120X275-1RA	HFS	11	120	4.75	143	5.63	30	44	1.73	275	10.83	108	238
TBC120X215-1A	HFS	0	120	4.75	145	5.70	30	44	1.73	290	11.42	74	164
TBC120X290-1A	HFS	0	120	4.75	145	5.70	30	44	1.73	290	11.42	107	235
TBC120X300-6LA	HFS	11	120	4.75	143	5.63	30	44	1.73	300	11.81	104	230
TBC120X300-6RA	HFS	11	120	4.75	143	5.63	30	44	1.73	300	11.81	104	230
TBC120X325-3LA	HFS	11	120	4.75	145	5.71	30	45	1.77	300	11.81	107	236
TBC120X325-1	HOE/HFS	0	120	4.75	197	7.77	30	67	2.62	325	12.80	106	234
TBC120X325-2L	HOE/HFS	8	120	4.75	197	7.77	30	67	2.62	325	12.80	107	235
TBC120X325-2R	HOE/HFS	8	120	4.75	197	7.77	30	67	2.62	325	12.80	107	235
TBC120X325-6LA	HFS	11	120	4.75	143	5.63	30	44	1.73	325	12.80	107	236
TBC120X325-6RA	HFS	11	120	4.75	143	5.63	30	44	1.73	325	12.80	107	236
TBC120X330-1A	HFS	0	120	4.75	145	5.71	30	45	1.77	330	12.99	104	230
TBC120X330-2LA	HFS	22	120	4.75	145	5.71	30	44	1.73	330	12.99	104	230
TBC120X330-2RA	HFS	22	120	4.75	145	5.71	30	44	1.73	330	12.99	108	238
TBC120X330-5A	HFS	0	120	4.75	145	5.70	30	44	1.73	330	12.99	107	235
TBC120X330-6LA	HFS	11	120	4.75	143	5.63	30	44	1.73	330	12.99	108	238
TBC120X330-6RA	HFS	11	120	4.75	143	5.63	30	44	1.73	330	12.99	108	238
TBC120X350-2LA	HFS	11	120	4.75	145	5.71	30	44	1.73	350	13.78	110	243
TBC120X350-2RA	HFS	11	120	4.75	145	5.71	30	44	1.73	350	13.78	110	243
TBC120X350-3A	HFS	0	120	4.75	145	5.71	30	44	1.73	350	13.78	109	240
TBC120X380-1A	HFS	0	120	4.75	165	6.50	30	63	2.47	380	14.97	132	291
TBC120X380-2LA	HFS	11	120	4.75	165	6.50	30	63	2.47	380	14.97	135	298
TBC120X380-2RA	HFS	11	120	4.75	165	6.50	30	63	2.47	380	14.97	135	298
TBC120X380-3	HFS	0	120	4.75	140	5.51	30	44	1.73	381	15.00	101	222

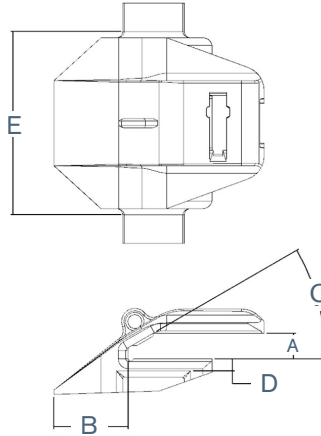
Toplok® lip shrouds



Lip Shrouds

PMID	Machine Type	Spade Angle	Lip A		Extension B		Ramp Angle	Undercut D		Shroud E		Weight	
			mm	in	mm	in		mm	in	mm	in	kg	lb
TBC120X395-1	HFS	0	120	4.75	140	5.51	30	44	1.73	394	15.50	103	227
TBC120X395-2L	HFS	22	120	4.75	140	5.51	30	44	1.73	394	15.50	95	210
TBC120X395-2R	HFS	22	120	4.75	140	5.51	30	44	1.73	394	15.50	95	210
TBC120X395-3	HOE	0	120	4.75	197	7.77	30	67	2.64	394	15.50	123	272
TBC120X395-4L	HOE	22	120	4.75	197	7.77	30	67	2.64	394	15.50	132	292
TBC120X395-4R	HOE	22	120	4.75	197	7.77	30	67	2.64	394	15.50	132	290
TBC120X395-5	HFS	0	120	4.75	203	8.00	30	75	2.95	394	15.50	124	274
TBC120X400-5A	HFS	0	120	4.75	145	5.71	30	42	1.65	400	15.75	98	217
TBC120X400-6LA	HFS	12	120	4.75	145	5.71	30	42	1.65	400	15.75	98	217
TBC120X400-6RA	HFS	12	120	4.75	145	5.71	30	43	1.68	400	15.75	98	217
TBC120X410-1	HFS	0	120	4.75	140	5.51	30	44	1.73	410	16.14	106	234
TBC120X410-2L	HFS	22	120	4.75	140	5.51	30	44	1.73	410	16.14	110	242
TBC120X410-2R	HFS	22	120	4.75	140	5.51	30	44	1.73	410	16.14	111	244
TBC120X410-3L	HFS	14	120	4.75	170	6.71	30	48	1.89	410	16.14	141	311
TBC120X410-3R	HFS	14	120	4.75	170	6.71	30	47	1.85	410	16.14	145	319
TBC120X420-1	HFS	0	120	4.75	145	5.71	30	42	1.65	420	16.54	94	208
TBC120X420-2L	HFS	12	120	4.75	145	5.71	30	42	1.65	420	16.54	95	209
TBC120X420-2R	HFS	12	120	4.75	145	5.71	30	42	1.65	420	16.54	95	209
TBC120X440-1B	HFS	0	120	4.75	145	5.71	30	42	1.65	438	17.25	108	237
TBC120X440-2LB	HFS	12	120	4.75	145	5.71	30	42	1.65	438	17.25	111	244
TBC120X440-2RB	HFS	12	120	4.75	145	5.71	30	42	1.65	438	17.25	108	239
TBC120X445-1	FEL/HFS	0	120	4.75	252	9.91	30	89	3.50	445	17.50	152	335
TBC120X445-2LA	FEL/HFS	13	120	4.75	242	9.52	30	89	3.50	445	17.50	159	350
TBC120X445-2RA	FEL/HFS	13	120	4.75	242	9.52	30	89	3.50	445	17.50	159	350
TBC120X465-1	HFS	0	120	4.75	145	5.71	30	43	1.69	465	18.31	135	297
TBC120X465-2L	HFS	12	120	4.75	145	5.71	30	43	1.69	465	18.31	135	297
TBC120X465-2R	HFS	12	120	4.75	145	5.71	30	43	1.69	465	18.31	135	297
TBC120X465-5	HFS	0	120	4.75	145	5.71	30	64	2.51	465	18.31	151	334
TBC120X465-6L	HFS	0	120	4.75	145	5.71	30	64	2.51	465	18.31	151	334
TBC120X465-6R	HFS	0	120	4.75	145	5.71	30	64	2.51	465	18.31	151	334
TBC120X535-3	HFS	0	120	4.75	145	5.71	30	43	1.68	535	21.06	152	335
TBC120X535-4L	HFS	12	120	4.75	145	5.71	30	43	1.68	535	21.06	150	330
TBC120X535-4R	HFS	12	120	4.75	145	5.71	30	43	1.68	535	21.06	150	330
TBC120X535-5	HFS	0	120	4.75	145	5.71	30	63	2.47	535	21.06	164	361
TBC120X535-6L	HFS	12	120	4.75	145	5.71	30	63	2.47	535	21.06	164	361
TBC120X535-6R	HFS	12	120	4.75	145	5.71	30	63	2.47	535	21.06	164	361
TBC140X330-1	HFS	0	140	5.50	81	3.17	30	81	3.17	330	12.99	154	340
TBC140X330-1A	HFS	0	140	5.50	170	6.69	30	54	2.13	330	12.99	124	274
TBC140X330-2L	HFS	12	140	5.50	200	7.87	30	81	3.17	330	12.99	156	344
TBC140X330-2LA	HFS	12	140	5.50	170	6.69	30	55	2.17	330	12.99	125	275
TBC140X330-2R	HFS	12	140	5.50	200	7.87	30	81	3.17	330	12.99	156	344
TBC140X330-2RA	HFS	12	140	5.50	170	6.69	30	55	2.17	330	12.99	125	275

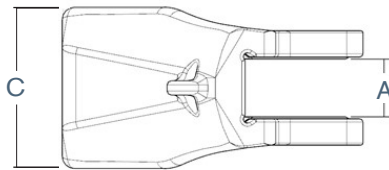
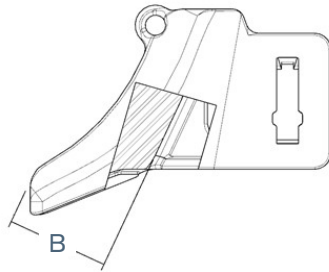
Toplok® lip shrouds



Lip Shrouds

PMID	Machine Type	Spade Angle	Lip A		Extension B		Ramp Angle	Undercut D		Shroud E		Weight	
			mm	in	mm	in		mm	in	mm	in	kg	lb
TBC140X390-3A	HFS	0	140	5.50	170	6.69	30	54	2.13	390	15.35	140	308
TBC140X390-4LA	HFS	12	140	5.50	170	6.69	30	55	2.17	390	15.35	141	310
TBC140X390-4RA	HFS	12	140	5.50	170	6.69	30	55	2.17	390	15.35	141	310
TBC140X405-1	HFS	0	140	5.50	170	6.69	30	55	2.17	404	15.92	143	316
TBC140X405-2L	HFS	12	140	5.50	170	6.69	30	55	2.17	404	15.92	144	317
TBC140X405-2R	HFS	12	140	5.50	170	6.69	30	55	2.17	404	15.92	144	317
TBC140X420-1A	HFS	0	140	5.50	170	6.69	30	54	2.13	420	16.54	145	320
TBC140X420-2LA	HFS	12	140	5.50	170	6.69	30	55	2.17	420	16.54	151	333
TBC140X420-2RA	HFS	12	140	5.50	170	6.69	30	55	2.17	420	16.54	151	333
TBC140X465-1LB	HOE	12	140	5.50	200	7.87	30	81	3.17	465	18.31	195	431
TBC140X465-1RB	HOE	12	140	5.50	200	7.87	30	81	3.17	465	18.31	195	431
TBC140X465-3A	HFS	0	140	5.50	165	6.50	30	64	2.50	465	18.31	186	409
TBC140X490-1B	HOE	0	140	5.50	200	7.87	30	81	3.17	490	19.29	199	439
TBC140X490-2LB	HOE	12	140	5.50	200	7.87	30	80	3.15	490	19.29	201	443
TBC140X490-2RB	HOE	12	140	5.50	200	7.87	30	80	3.15	490	19.29	201	443
TBC140X490-4L	HOE/HFS	12	140	5.50	201	7.90	30	81	3.20	490	19.30	230	507
TBC140X490-4R	HOE/HFS	12	140	5.50	201	7.90	30	81	3.20	490	19.30	230	507
TBC140X575-1LA	HOE	12	140	5.50	221	8.69	30	76	3.01	575	22.64	201	443
TBC140X575-1RA	HOE	12	140	5.50	221	8.69	30	76	3.01	575	22.64	201	443
TBC150X350-1A	HOE	0	150	6.00	211	8.30	33	73	2.86	350	13.78	136	300
TBC150X350-2LA	HOE	14	150	6.00	211	8.30	33	73	2.86	350	13.78	137	302
TBC150X350-2RA	HOE	14	150	6.00	211	8.30	33	73	2.86	350	13.78	137	302
TBC150X445-1	HOE	0	150	6.00	211	8.30	33	73	2.86	445	17.50	152	335
TBC150X445-2L	HOE	14	150	6.00	211	8.30	33	73	2.86	445	17.50	156	344
TBC150X445-2R	HOE	14	150	6.00	211	8.30	33	73	2.86	445	17.50	156	344
TBC160X385-1	HFS	0	160	6.25	200	7.89	30	65	2.56	385	15.16	188	414
TBC160X385-2L	HFS	14	160	6.25	200	7.89	30	65	2.56	385	15.16	185	408
TBC160X385-2R	HFS	14	160	6.25	200	7.89	30	65	2.56	385	15.16	185	408
TBC160X430-1	HOE	0	160	6.25	176	6.94	30	64	2.52	430	16.93	159	351
TBC160X430-2L	HOE	14	160	6.25	176	6.94	30	64	2.52	430	16.93	166	366
TBC160X430-2R	HOE	14	160	6.25	176	6.94	30	64	2.52	430	16.93	166	366
TBC160X450-1	HFS	0	160	6.25	200	7.89	30	65	2.56	450	17.72	207	456
TBC160X450-2L	HFS	14	160	6.25	197	7.75	30	65	2.56	450	17.72	204	450
TBC160X450-2R	HFS	14	160	6.25	197	7.75	30	65	2.56	450	17.72	204	450
TBC160X450-3	HOE	0	160	6.25	250	9.84	30	90	3.56	450	17.72	183	403
TBC160X450-4L	HOE	14	160	6.25	250	9.84	30	90	3.56	450	17.72	187	412
TBC160X450-4R	HOE	14	160	6.25	250	9.84	30	90	3.56	450	17.72	187	412
TBC160X465-1	HOE	0	160	6.25	176	6.94	30	64	2.52	465	18.31	166	366
TBC160X465-2L	HOE	14	160	6.25	176	6.94	30	64	2.52	465	18.31	173	381
TBC160X465-2R	HOE	14	160	6.25	176	6.94	30	64	2.52	465	18.31	173	381
TBC160X520-1L	HFS	14	160	6.25	227	8.94	30	64	2.52	520	20.47	298	656
TBC160X520-1R	HFS	14	160	6.25	227	8.94	30	64	2.52	520	20.47	298	656
TBC160X570-1L	HFS	14	160	6.25	227	8.94	30	64	2.52	570	22.44	309	682
TBC160X570-1R	HFS	14	160	6.25	227	8.94	30	64	2.52	570	22.44	309	682

Toplok® lip shrouds



Lower Wing Shrouds

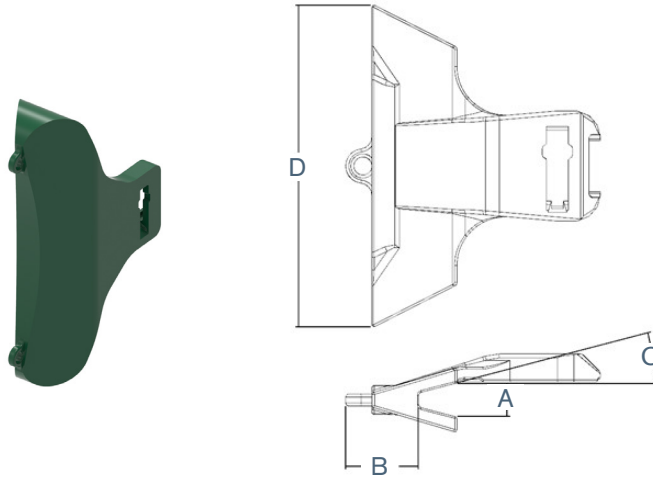
PMID	Shroud Type	Wing Thickness A		Extension from Lip B		Shroud Width C		Weight	
		mm	in	mm	in	mm	in	kg	lb
TAW50-1	Cast Corner	50	2.00	135	5.30	308	12.12	60	133
TAW65-1	Cast Corner	65	2.50	138	5.42	314	12.36	67	147
TAW75-1	Cast Corner	70	2.75	160	6.30	324	12.75	71	157
TAW90-1	Cast Corner	90	3.50	160	6.30	330	12.99	70	154
TAW115-1	Cast Corner	115	4.50	168	6.62	380	14.98	80	177

Lower Wing Shrouds

PMID	Shroud Type	Wing Thickness A		Extension from Lip B		Shroud Width C		Weight	
		mm	in	mm	in	mm	in	kg	lb
TAW135-1	Cast Lip	120	4.75	206	8.11	444	17.48	101	222
TAW135-2*	Cast Lip*	120	4.75	170	6.69	339	13.36	112	246
TBW165-1L*	Cast Lip*	160	6.25	152	6.00	368	14.50	173	381
TBW165-1R*	Cast Lip*	160	6.25	152	6.00	368	14.50	173	381

*For earlier ESCO lip and shroud system

Toplok® lip shrouds



Upper Wing Shrouds

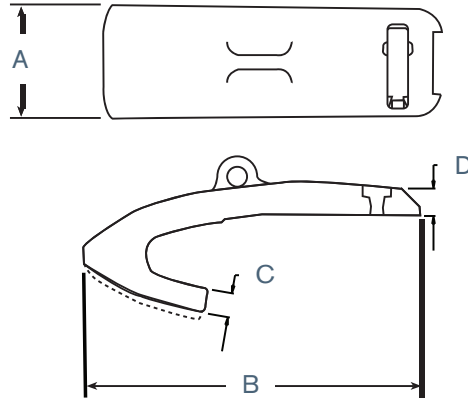
PMID	Machine Type	Wing Thickness A		Extension from Lip B		Chamfer Angle C	Shroud Width D		Weight	
		mm	in	mm	in		mm	in	kg	lb
TEW38X440-1	LHD/FEL	38	1.40	87	3.42	0	433	17.03	25	55
TEW38X440-2	LHD/FEL	38	1.40	87	3.42	0	433	17.03	25	55
TAW40X440-1A	Backhoe/FEL/HFS	40	1.50	117	4.59	0	437	17.20	23	51
TAW40X560-1**	Cat Profile 1500mm Radius	40	1.50	188	7.42	0	561	22.08	47	105
TAW40X600-1	Backhoe/FEL/HFS	40	1.50	76	3.00	0	600	23.60	29	64
TAW50X505-1A	Backhoe/FEL/HFS	50	2.00	113	4.46	15	507	19.97	27	60
TAW50X505-2	Backhoe/FEL/HFS	50	2.00	110	4.33	0	507	19.97	44	96
TAW50X630-1A**	1500mm Radius	50	2.00	106	4.18	0	628	24.73	44	98
TBW50X655-1**	1500mm Radius	50	2.00	208	8.18	0	671	26.42	78	172
TAW50X800-1A*	Backhoe/FEL/HFS	50	2.00	132	5.21	0	800	31.50	71	156
TAW65X800-1B*	Backhoe/FEL/HFS	65	2.50	125	4.92	0	800	31.50	74	164
TBW75X545-1A	Backhoe/HFS	75	3.00	120	4.73	15	546	21.50	43	95
TBW75X555-1	Backhoe/FEL/HFS	75	3.00	168	6.60	0	555	21.85	76	167
TBW75X655-1**	1500mm Radius	75	3.00	168	6.60	0	653	25.70	88	194
TBW80X800-1A*	Backhoe/HFS	75	3.00	154	6.08	0	800	31.49	109	240
TBW90X855-1A	Backhoe/FEL/HFS	90	3.50	268	10.55	0	855	33.65	205	452
TBW100X965-1**	Cat Profile 1500mm Radius	100	4.00	169	6.64	0	965	38.00	159	351
TBW120X760-1A	Backhoe/FEL/HFS	120	4.75	212	8.36	0	760	29.92	184	406
TAW120X760-1	Backhoe/HFS	120	4.75	213	8.40	0	762	30.00	147	325
TAW120X760-1	Backhoe/HFS	120	4.75	213	8.40	0	762	30.00	147	325
TBW140X800-1	Backhoe/HFS	140	5.50	225	8.85	0	803	31.60	211	466
TBW90X495-1	FEL T-4 Wing Casting	--	--	165	6.50	--	497	19.58	61	134

NOTE: Though not common, minor bucket wing grinding may be required for fit-up of upper wing shroud due to weld repair, peening or other wing features

* Wing shroud has optional provision for through-pin attachment if wing features holes for pins

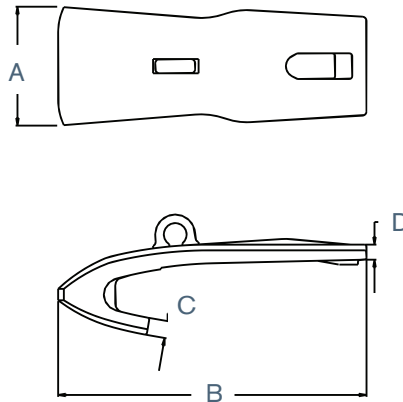
** Profile of bucket wing leading edge for some buckets have a radius of 1500 mm / 59.0 in

Whisler WH-8 lip shrouds



Toplok[®] Lip Center Shrouds

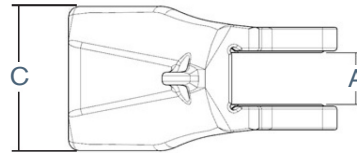
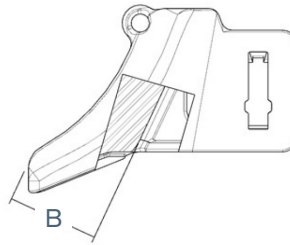
PMID	Locks		Width A		Length B		Lower Leg Thickness C		Upper Leg Thickness D		Weight		Comments
	Boss	Pin	mm	in	mm	in	mm	in	mm	in	kg	lb	
TECS8-1	TEBA	TEP	152	6.00	607	23.9	42	1.67	43	1.69	59	130	Standard Duty
TACS8-1B	TAB	TAP	185	7.28	544	21.4	38	1.50	38	1.50	45	99	Standard Duty
TACS8-2B	TAB	TAP	240	9.44	544	21.4	38	1.50	38	1.50	62	137	Standard Duty
TACS8-2-HD	TAB	TAP	240	9.44	569	22.4	70	2.75	70	2.75	91	200	High Abrasion
TACS8-3B	TAB	TAP	354	13.94	544	21.4	38	1.50	38	1.50	86	189	Standard Duty
TACS8-3-HD	TAB	TAP	354	13.94	569	22.4	70	2.75	70	2.75	134	295	High Abrasion
TACS8-4B	TAB	TAP	264	10.41	544	21.4	38	1.50	38	1.50	60	132	Standard Duty
TACS8-4-HD	TAB	TAP	257	10.12	569	22.4	70	2.75	70	2.75	91	201	High Abrasion
TACS8-5	TAB	TAP	305	12.00	607	23.9	38	1.50	40	1.57	116	255	Standard Duty
TACS8-6	TAB	TAP	248	9.75	607	23.9	40	1.57	40	1.57	92	203	Standard Duty



Lip Center Shrouds

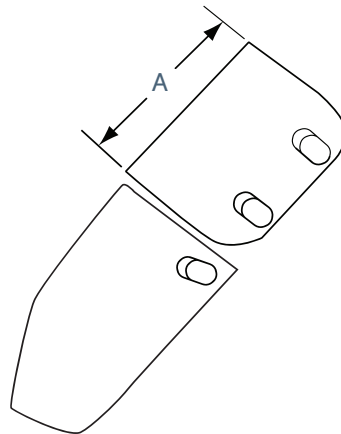
PMID	Locks		Width A		Length B		Lower Leg Thickness C		Upper Leg Thickness D		Weight		Comments
	C-Clamp	Wedge	mm	in	mm	in	mm	in	mm	in	kg	lb	
CE25182	419CLT	419WT	210	8.27	686	27.00	38	1.48	34	1.32	55	121	Lip Center Inside
CE25182-2	419CLT	419WT	278	10.93	686	27.00	38	1.48	34	1.32	75	165	Lip Center Inside
CE25182-5	419CLT	419WT	210	8.27	686	27.00	38	1.48	34	1.32	48	105	Lip Center Inside
CE25183	419CLT	419WT	219	8.62	686	27.00	38	1.48	34	1.32	68	150	Lip Center Outside
CE28993	419CLT	419WT	202	7.96	781	30.75	--	--	--	--	104	230	Lip Center Inside
CE28993-2	419CLT	419WT	285	11.24	781	30.75	--	--	--	--	144	317	Lip Center Inside

Whisler WH-8 lip shrouds



Toplok® Wing Shrouds

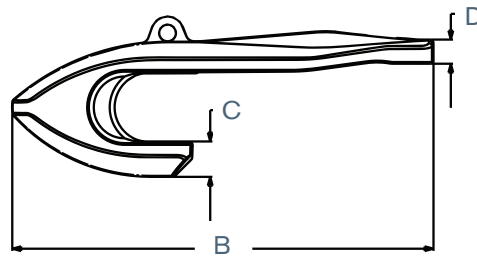
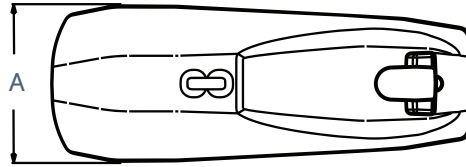
PMID	Shroud Type	Locks		Length		Weight		Comments
		Boss	Pin	mm	in	kg	lb	
TAWS8-1B	Upper Wing	TAB	TBP	375	14.75	55	122	Standard Duty
TAWS8-2LB	Lower Wing	TAB	TBP	--	--	71	157	Standard Duty
TAWS8-2RB	Lower Wing	TAB	TBP	--	--	71	157	Standard Duty
TAWS8-2L-HD	Lower Wing	TAB	TBP	--	--	95	210	High Abrasion
TAWS8-2R-HD	Lower Wing	TAB	TBP	--	--	95	210	High Abrasion
TAWS8-3LA	Lower Wing	TAB	TBP	--	--	68	151	Standard Duty
TAWS8-3RA	Lower Wing	TAB	TBP	--	--	68	151	Standard Duty
TAWS8-6L	Lower Wing	TAB	TBP	--	--	209	460	For AMSCO Wing; Standard Duty
TAWS8-6R	Lower Wing	TAB	TBP	--	--	209	460	For AMSCO Wing; Standard Duty



Wing Shrouds

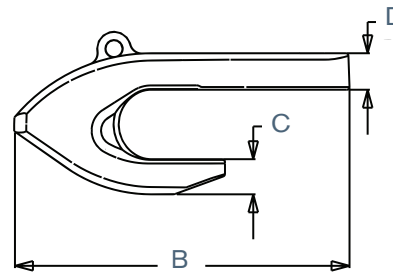
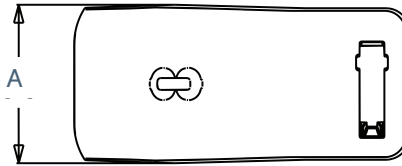
PMID	Shroud Type	Locks		Length		Weight		Comments
		C-Clamp	Wedge	mm	in	kg	lb	
PDE30318A	Upper Wing	488SPT	487WT	375	14.75	56	124	Standard Duty
PDE30318A-XHD	Upper Wing	488SPT	487WT	375	14.75	63	139	High Abrasion
CE25775L	Lower Wing	447SPT	447WT	--	--	47	103	Standard Duty
CE25775R	Lower Wing	447SPT	447WT	--	--	47	103	Standard Duty
PDE32721LB	Lower Wing	488SPT	487WT	--	--	68	151	Standard Duty
PDE32721RB	Lower Wing	488SPT	487WT	--	--	68	151	Standard Duty
PDE32721LA-XHD	Lower Wing	488SPT	487WT	--	--	88	193	High Abrasion
PDE32721RA-XHD	Lower Wing	488SPT	487WT	--	--	88	193	High Abrasion

Whisler WH-10 lip shrouds



Whisler Plus™ (WHP) Lip Center Shrouds

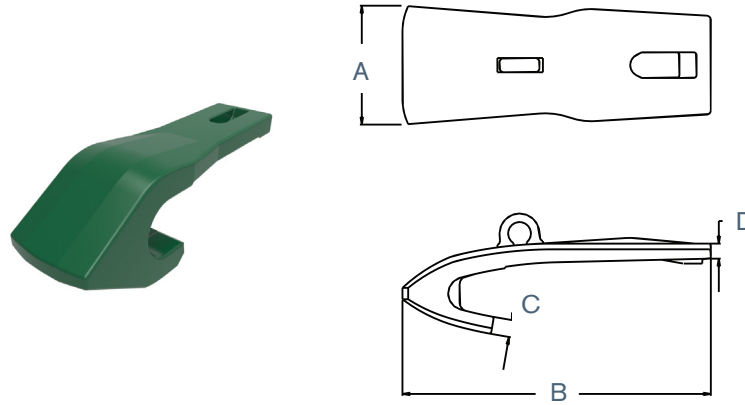
PMID	Locks		Width		Length		Lower Leg Thickness		Upper Leg Thickness		Weight		Comments
	Spool	Pin	mm	in	mm	in	mm	in	mm	in	kg	lb	
WHP10X278CS-1A	WHP10TSPCSA	WHP10TWCSA	278	10.95	804	31.66	44	1.75	62	2.43	114	252	WH-10
WHP10X278CS-2A	WHP10TSPCSA	WHP10TWCSA	278	10.95	804	31.66	67	2.63	58	2.30	140	308	WH-10
WHPS10X270CS-1	WHP10TSPCSA	WHP10TWCSA	270	10.62	809	31.85	66	2.58	47	1.84	123	272	For ESCO Super 10 Lips
WHPS10X287CS-1	WHP10TSPCSA	WHP10TWCSA	287	11.30	778	30.62	65	2.55	63	2.46	132	290	For ESCO Super 10 Lips
WHPS10X305CS-1	WHP10TSPCSA	WHP10TWCSA	305	12.00	809	31.85	66	2.58	47	1.84	138	304	For ESCO Super 10 Lips



Toplok® Lip Center Shrouds

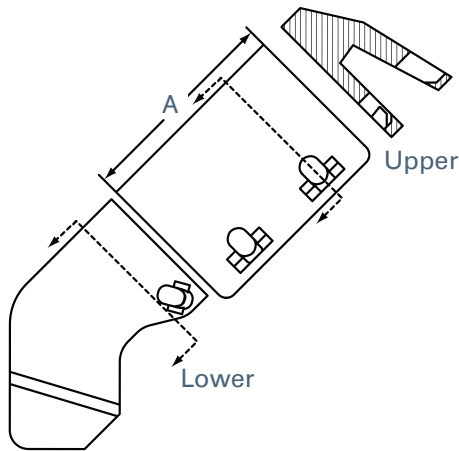
PMID	Locks		Width		Length		Lower Leg Thickness		Upper Leg Thickness		Weight		Comments
	Boss	Pin	mm	in	mm	in	mm	in	mm	in	kg	lb	
TBCS10-1D	TBB	TBP	278	10.95	632	24.87	44	1.75	69	2.72	122	268	Standard Duty
TBCS10-6A	TBB	TBP	219	8.62	632	24.87	67	2.62	69	2.72	113	250	High Abrasion
TBCS10-9	TBB	TBP	318	12.50	632	24.87	44	1.75	69	2.72	145	320	For AMSCO Lips; Standard Duty
TBCS10-10	TBB	TBP	279	11.00	548	21.56	51	2.00	57	2.25	100	220	Standard Duty
TBCS10-12	TBB	TBP	259	10.19	632	24.87	70	2.75	69	2.72	120	264	Standard Duty, No Lip Stabilizer Pocket
TBCS10-13	TBB	TBP	298	11.75	632	24.87	66	2.60	69	2.70	147	323	Standard Duty

Whisler WH-10 lip shrouds



Whisler Center Lip Shrouds

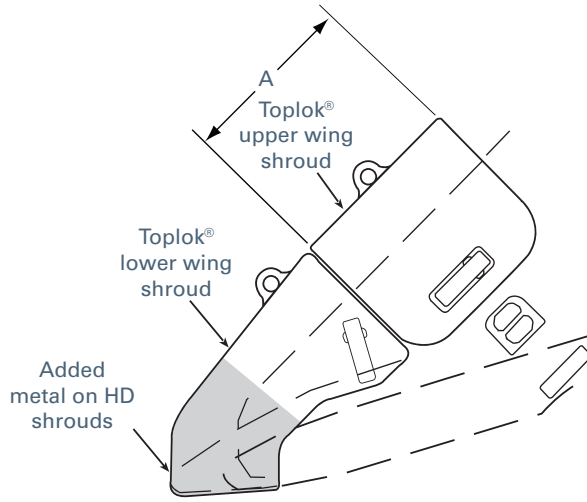
PMID	Locks		Width		Length		Lower Leg Thickness		Upper Leg Thickness		Weight		Comments
	C-Clamp	Wedge	A	B	B	A	C	D	mm	in	kg	lb	
CE25759A	419CLT	419WT	278	10.95	806	31.75	44	1.75	49	1.94	120	265	Oversize Wedge 419WT2
CE25759-4A	419CLT	419WT	236	9.28	806	31.75	44	1.75	49	1.94	97	214	Oversize Wedge 419WT2
CE25759-5A	419CLT	419WT	279	11.00	862	33.94	56	2.20	66	2.60	138	304	Oversize Wedge 419WT2
ET9292A	419CLT	419WT	330	13.00	806	31.75	44	1.75	49	1.94	193	425	Oversize Wedge 419WT2
CE25031B	419CLT	419WT	278	10.95	806	31.75	64	2.50	49	1.94	145	320	Oversize Wedge 419WT2
CE25031-4D	419CLT	419WT	200	7.87	806	31.75	64	2.50	49	1.94	95	210	Oversize Wedge 419WT2
H25759H	419CLT	419WT	278	10.95	832	32.75	70	2.75	49	1.94	147	325	Oversize Wedge 419WT2
H25759-4HA	419CLT	419WT	236	9.28	832	32.75	70	2.75	49	1.94	117	257	Oversize Wedge 419WT2
PDE47064	419CLT	419WT	278	10.95	806	31.75	44	1.75	68	2.69	154	340	Oversize Wedge 419WT2
PDE49167-6	419CLT	419WT	259	10.19	806	31.75	64	2.50	49	1.94	129	284	ESCO Super 10 Lips; Oversize Wedge 419WT2
290236	419CLT	419WT	267	10.50	832	32.75	64	2.50	49	1.94	154	340	For AMSCO Lips



Whisler Plus™ (WHP) Wing Shrouds

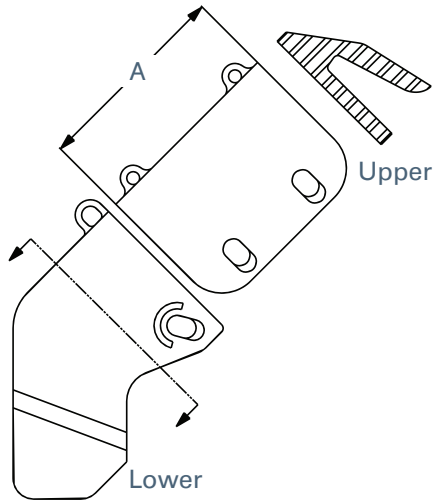
PMID	Shroud Type	Locks		Length		Weight		Comments
		Spool	Pin	mm	in	kg	lb	
WHP10UWS-1A	Upper Wing	WHP10TSPWSB	WHP10TWWSA	495	19.50	134	295	For Double Curved Lips
WHP10UWS-1B	Upper Wing	WHP10TSPWSB	WHP10TSPWSB	495	19.50	127	280	For Double Curved Lips
WHP10LWS-1LA	Lower Wing	WHP10TSPWSB	WHP10TWWSA	--	--	147	325	For Double Curved Lips
WHP10LWS-1LB	Lower Wing	WHP10TSPWSB	WHP10TSPWSB	--	--	147	324	For Double Curved Lips
WHP10LWS-1RA	Lower Wing	WHP10TSPWSB	WHP10TWWSA	--	--	147	325	For Double Curved Lips
WHP10LWS-1RB	Lower Wing	WHP10TSPWSB	WHP10TSPWSB	--	--	147	324	For Double Curved Lips
WHP10LWS-2LB	Lower Wing	WHP10TSPWSB	WHP10TWWSA	--	--	159	351	For Straight Curved Lips
WHP10LWS-2RB	Lower Wing	WHP10TSPWSB	WHP10TWWSA	--	--	159	351	For Straight Curved Lips

Whisler WH-10 lip shrouds



Toplok® Wing Shrouds

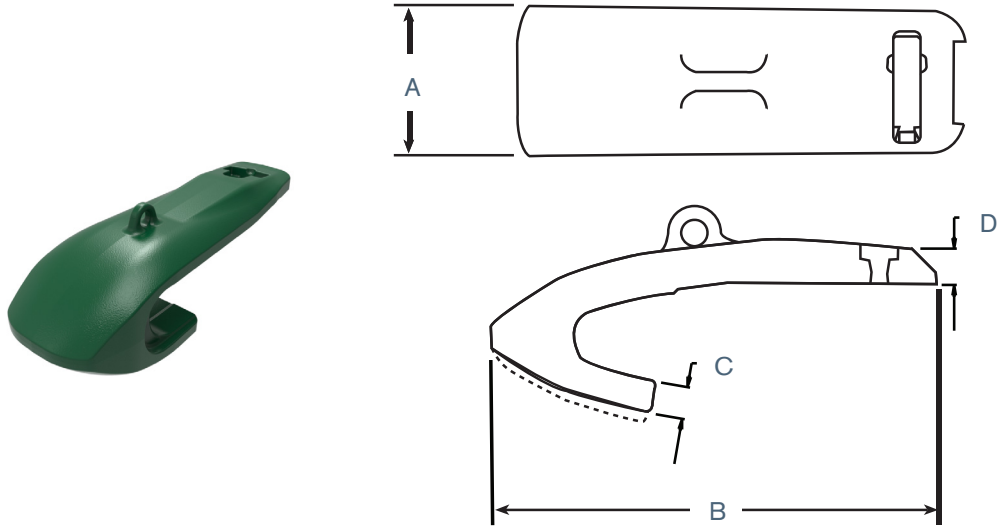
PMID	Shroud Type	Locks		Length		Weight		Comments
		Boss	Pin	mm	in	kg	lb	
TAWS10-1	Upper Wing	TAB	TAP	495	19.5	151	332	
TAWS10-2L	Lower Wing	TAB	TAP	--	--	186	410	For Double Curved Lips
TAWS10-2R	Lower Wing	TAB	TAP	--	--	186	410	For Double Curved Lips
TAWS10-3L	Lower Wing	TAB	TAP	--	--	200	445	For Straight Curved Lips
TAWS10-3R	Lower Wing	TAB	TAP	--	--	200	445	For Straight Curved Lips



Wing Shrouds

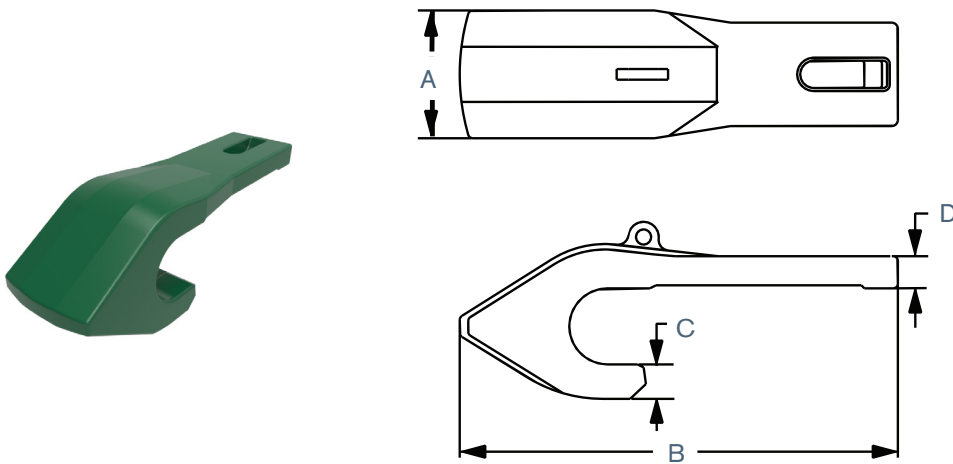
PMID	Shroud Type	Locks		Length		Weight		Comments
		C-Clamp	Wedge	mm	in	kg	lb	
PDD27246A	Upper Wing	486SPT	485WT	495	19.50	132	290	
PDE32716L2H-12H	Lower Wing	486SPT	485WT	--	--	149	328	For Double Curved Lips
PDE32716R2H-12H	Lower Wing	486SPT	485WT	--	--	149	328	For Double Curved Lips
PDE51647LA	Lower Wing	486SPT	485WT	--	--	151	333	For Straight Curved Lips
PDE51647RA	Lower Wing	486SPT	485WT	--	--	151	333	For Straight Curved Lips

Whisler WH-12 lip shrouds for Bucyrus International



Whisler Plus™ (WHP) Lip Center Shroud

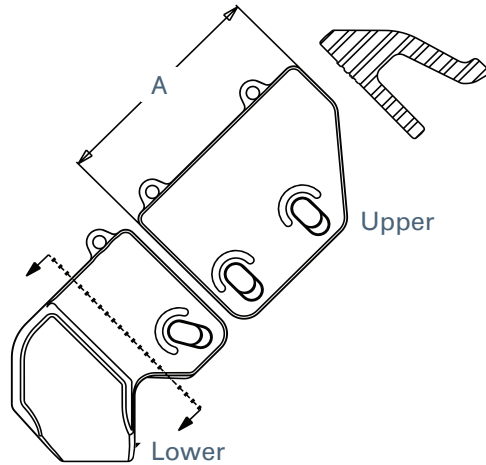
PMID	Locks		Width A		Length B		Lower Leg Thickness C		Upper Leg Thickness D		Weight	
	Spool	Pin	mm	in	mm	in	mm	in	mm	in	kg	lb
WHP12X267BCS-1	WHP12TSPBCS	WHP12TWCS	267	10.50	857	33.73	73	2.86	79	3.11	151	333



Whisler Lip Center Shroud

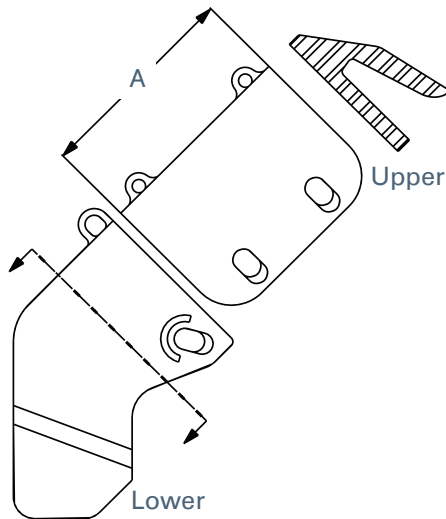
PMID	Locks		Width A		Length B		Lower Leg Thickness C		Upper Leg Thickness D		Weight	
	C-Clamp	Wedge	mm	in	mm	in	mm	in	mm	in	kg	lb
PDE51916-1	9770CL	9771WT	267	10.50	914	36.00	72	2.83	67	2.63	168	411

Whisler WH-12 lip shrouds for Bucyrus International



Whisler Plus™ (WHP) Wing Shrouds

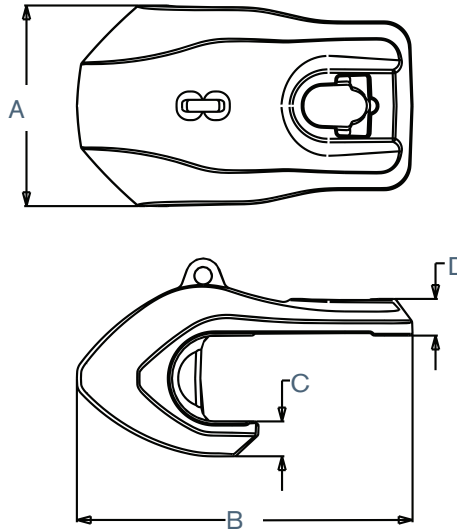
PMID	Shroud Type	Locks		Length		Weight		Comments
		Spool	Pin	mm	in	kg	lb	
WHP12BUWS-1L	Upper Wing	WHP12TSPBWS	WHP12TWWWS	552	21.75	142	313	Wings with 229mm/9.00in Lock Hole Spacing
WHP12BUWS-1R	Upper Wing	WHP12TSPBWS	WHP12TWWWS	552	21.75	142	313	Wings with 229mm/9.00in Lock Hole Spacing
WHP12BUWS-1LA	Upper Wing	WHP12TSPBWS	WHP12TWWWS	552	21.75	140	310	Wings with 229mm/9.00in Lock Hole Spacing
WHP12BUWS-1RA	Upper Wing	WHP12TSPBWS	WHP12TWWWS	552	21.75	140	310	Wings with 229mm/9.00in Lock Hole Spacing
WHP12BUWS-2	Upper Wing	WHP12TSPBWS	WHP12TWWWS	539	21.21	159	350	Wings with 381mm/15.00in Lock Hole Spacing
WHP12BLWS-1L	Lower Wing	WHP12TSPBWS	WHP12TWWWS	--	--	166	365	Use with WHP12BUWS-1L
WHP12BLWS-1R	Lower Wing	WHP12TSPBWS	WHP12TWWWS	--	--	166	365	Use with WHP12BUWS-1R
WHP12BLWS-2L	Lower Wing	WHP12TSPBWS	WHP12TWWWS	--	--	180	398	Use with WHP12BUWS-2
WHP12BLWS-2R	Lower Wing	WHP12TSPBWS	WHP12TWWWS	--	--	180	398	Use with WHP12BUWS-2
WHP12BLWS-1LA	Lower Wing	WHP12TSPBWS	WHP12TWWWS	--	--	162	358	Use with WHP12BUWS-2
WHP12BLWS-1RA	Lower Wing	WHP12TSPBWS	WHP12TWWWS	--	--	162.4	358	Use with WHP12BUWS-2



Wing Shrouds

PMID	Shroud Type	Locks		Length		Weight		Comments
		C-Clamp	Wedge	mm	in	kg	lb	
PDE52677A	Upper Wing	PDE52678	PDE52679	556	21.88	170	374	Wings with 381mm/15.00in Lock Hole Spacing
PDE52676LC	Lower Wing	PDE52678	PDE52679	--	--	168	371	Universal Fit
PDE52676RC	Lower Wing	PDE52678	PDE52679	--	--	168	371	Universal Fit

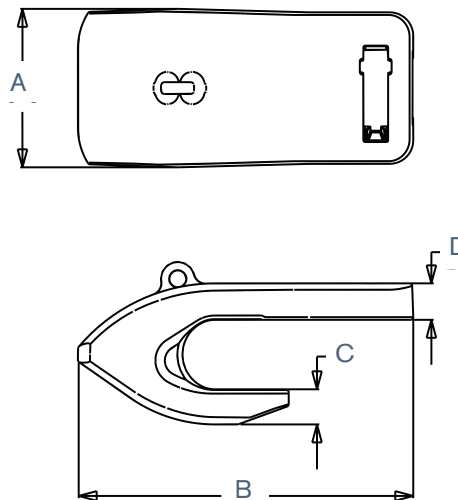
Whisler WH-12 lip shrouds for P&H



Whisler Plus™ (WHP) Lip Center Shrouds

PMID	Locks		Width A		Length B		Lower Leg Thickness C		Upper Leg Thickness D		Weight		Comments
	Spool	Pin	mm	in	mm	in	mm	in	mm	in	kg	lb	
WHP12X368HCS-1	WHP12TSPHCS	WHP12TWCS	368	14.50	616	24.26	64	2.53	67	2.65	156	345	
WHP12X293HCS-1NP	WHP12TSPHCS	WHP12TWCS	293	11.54	690	27.17	50	1.97	66	2.59	278	126	--
WHP12X275HCS-1*	WHP12TSPHCS	WHP12TWCS	275	10.81	682	26.84	62	2.46	66	2.59	122	270	Designed for Oil sands

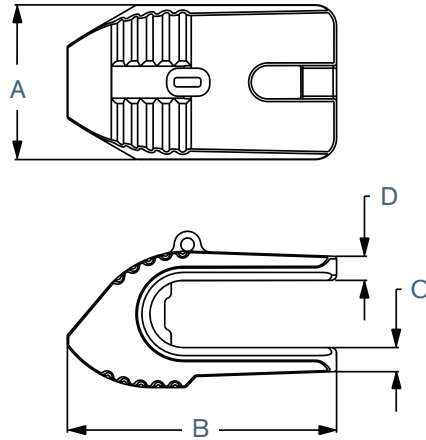
* Special fit only for oil sands lip



Toplok® Lip Center Shroud

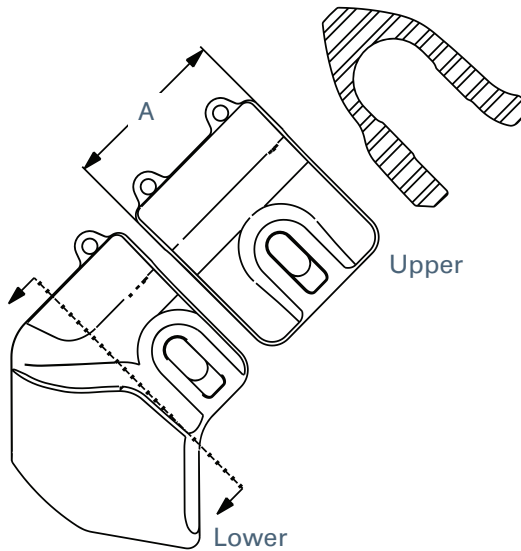
PMID	Locks		Width A		Length B		Lower Leg Thickness C		Upper Leg Thickness D		Weight		Comments
	Boss	Pin	mm	in	mm	in	mm	in	mm	in	kg	lb	
TBCS12-1A	TBB	TBP	368	14.50	579	22.79	44	1.75	64	2.50	177	390	Standard Duty

Whisler WH-12 lip shrouds for P&H



Whisler Lip Center Shroud

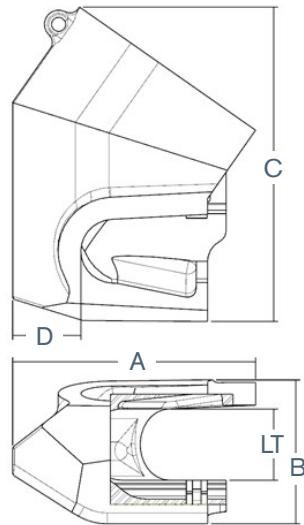
PMID	Locks		Width A		Length B		Lower Leg Thickness C		Upper Leg Thickness D		Weight		Comments
	C-Clamp	Wedge	mm	in	mm	in	mm	in	mm	in	kg	lb	
PDE51133	PDE51310	PDE51311A	368	14.50	641	25.25	57	2.25	57	2.25	240	530	Oversize Wedge PDE51311-3A



Whisler Plus™ (WHP) Wing Shrouds

PMID	Shroud Type	Locks		Length		Weight	
		Spool	Pin	mm	in	kg	lb
WHP12HUWS-1	Upper Wing	WHP12TSPHWS	WHP12TWWS	353	13.88	122	268
WHP12HLWS-1L	Lower Wing	WHP12TSPHWS	WHP12TWWS	--	--	252	556
WHP12HLWS-1R	Lower Wing	WHP12TSPHWS	WHP12TWWS	--	--	252	556

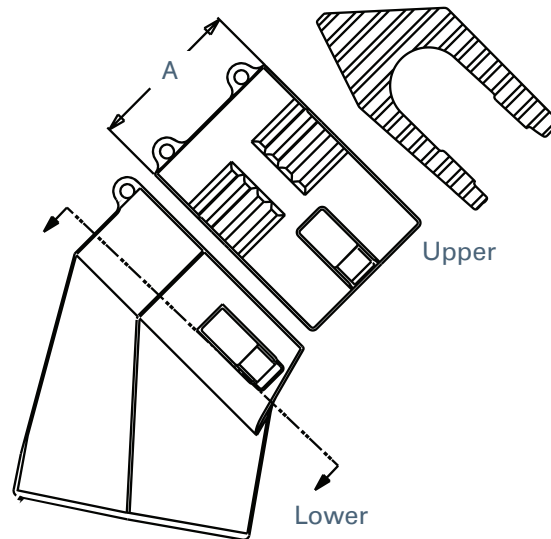
Whisler WH-12 lip shrouds for P&H



Toplok® Wing Shrouds

PMID	Shroud Type	Locks		Length		Weight	
		Boss	Pin	mm	in	kg	lb
TBWS12-1C	Upper Wing	TBB	TBP	349	13.75	167	368
TBWS12-2LB	Lower Wing	TBB	TBP	542	21.34	281	620
TBWS12-2RB	Lower Wing	TBB	TBP	542	21.34	281	620
TBWS12-3L*	Lower Wing	TBB	TBP	762	30.00	203	448
TBWS12-3R*	Lower Wing	TBB	TBP	762	30.00	203	448

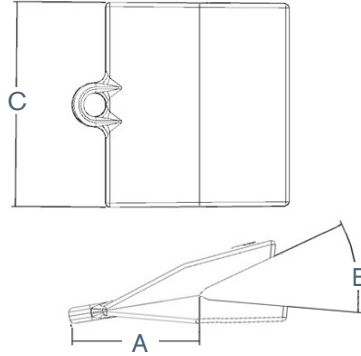
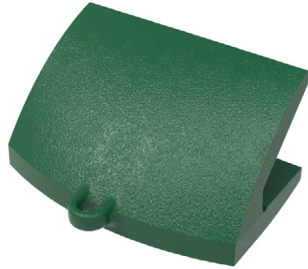
* Special fit only for oil sands Lip



Wing Shrouds

PMID	Shroud Type	Locks		Length		Weight		Comments
		C-Clamp	Wedge	mm	in	kg	lb	
PDE51291	Upper Wing	PDE51310	PDE51311A	353	13.88	195	430	Oversized Spool PDE51311-3A
PDE51292L	Lower Wing	PDE51310	PDE51311A	--	--	392	865	Oversized Spool PDE51311-3A
PDE51292R	Lower Wing	PDE51310	PDE51311A	--	--	392	865	Oversized Spool PDE51311-3A

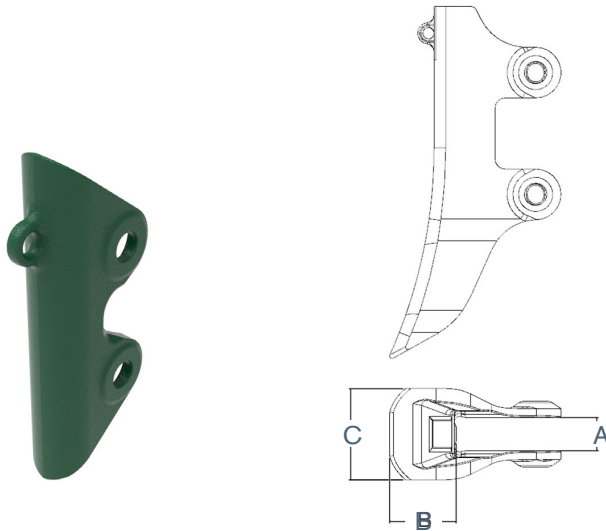
Miscellaneous lip shrouds



Weld-on Plate Lip Shrouds

PMID	PLATE LIP SHROUD TYPE	SPADE	MINIMUM LIP THICKNESS		MAXIMUM LIP THICKNESS		EXTENSION FROM LIP A		RAMP ANGLE B	SHROUD WIDTH C		WEIGHT	
			MM	IN	MM	IN	MM	IN		MM	IN	KG	LBS
LS2.5-15	4	0	50	2.00	65	2.50	105	4.15	30	381	15.00	26	57
WSC70X250-1	4	0	60	2.36	75	3.00	156	6.16	30	250	9.84	22	47
WSC90X320-1	6	0	75	3.00	100	4.00	100	3.94	30	320	12.58	28	62
WSC90X320-1L	6	14	75	3.00	100	4.00	138	5.45	30	320	12.60	27	60
WSC90X320-1R	6	14	75	3.00	100	4.00	138	5.45	30	320	12.60	27	60
WSC80X323-1	4	0	75	3.00	90	3.50	124	4.90	30	323	12.72	30	67
WSC90X360-1	6	0	75	3.00	100	4.00	141	5.57	30	360	14.17	31	68
WSC90X360-1L	6	14	75	3.00	100	4.00	138	5.45	30	360	14.17	31	68
WSC90X360-1R	6	14	75	3.00	100	4.00	138	5.45	30	360	14.17	31	68
LS3.5-15-1	5	0	75	3.00	90	3.50	179	7.06	30	381	15.00	51	112
LS4.0-15	5	0	90	3.50	100	4.00	179	7.06	30	381	15.00	73	161
LS5.5-18	6	0	120	4.75	150	6.00	247	9.73	30	441	17.36	105	232
LS6.0-25	6	0	150	6.00	150	6.00	250	9.83	30	619	24.38	160	353

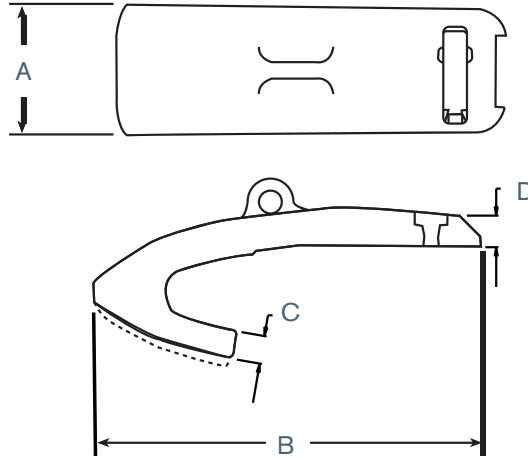
Miscellaneous lip shrouds



Pin-on Wing Shrouds for Cast Lips

PMID	SHROUD TYPE	WING THICKNESS A		EXTENSION FROM LIP B		SHROUD WIDTH C		WEIGHT		BOSS
		MM	IN	MM	IN	MM	IN	KG	LBS	
ES-3777SA	LOWER WING	40	1.50	737	29.00	66	2.60	21	47	E7-3778SA
PSW40X465-1	LOWER WING	40	1.50	465	18.31	98	3.86	21	47	--
ES4410SA	LOWER WING	50	2.00	800	31.50	66	2.61	44	97	--
PSW50X565-1	LOWER WING	50	2.00	565	22.24	108	4.25	31	69	--
PSW60X650-1	LOWER WING	60	2.36	650	25.59	118	4.65	41	90	--
PDE52445	LOWER WING	80	3.15	428	16.87	229	9.00	99	218	--
PDE52420	LOWER WING	100	4.00	559	22.00	254	10.00	215	474	--
PDE43723	LOWER WING	120	4.75	922	36.31	202	7.95	144	317	PDE43722
PDE43723-2	LOWER WING	120	4.75	1081	42.54	202	7.95	174	384	PDE43722
PDE43723-3	LOWER WING	120	4.75	1081	42.54	229	9.00	191	420	PDE43722

Miscellaneous lip shrouds



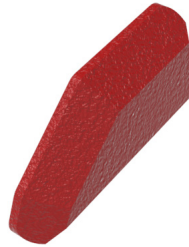
Berkeley Style Lip Shrouds

Lip Size	Shroud Type	PMID	Locks		Width		Length		Lower Leg Thickness		Upper Leg Thickness		Weight		Comments
			Boss	Pin	A mm	in	B mm	in	C mm	in	D mm	in	kg	lb	
TLC 4.75	Center	TBCS12-4	TBB	HPB-ASSY-1A	254	10.00	677	26.67	26	1.03	69	2.72	104	230	Fits external stabilizer
TLC 6.0	Center	TBCS12-3	TBB	HPB-ASSY-1A	254	10.00	716	28.18	36	1.43	69	2.72	113	250	Fits external stabilizer
TLC 6.0	Center	TBCS-TLC60-1A	TBB	HPB-ASSY-1A	254	10.00	607	23.88	45	1.76	65	2.57	92	202	Fits external stabilizer

Shroud pins and bosses



Toplok boss



Nemisys thrust boss

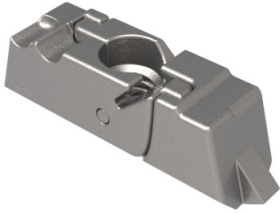


Nemisys lip shroud boss

Shroud Bosses

PMID	DESCRIPTION	WEIGHT	
		KG	LBS
N1TBL	NEMISYS THRUST BOSS	1.4	3.0
N1TBR	NEMISYS THRUST BOSS	1.4	3.0
NSHB-1	NEMISYS LIP SHROUD BOSS	2.0	4.5
NSHB-2	NEMISYS LIP SHROUD BOSS	2.4	5.3
TAB	A SIZE TOPLOK BOSS	0.8	1.7
TBB	B SIZE TOPLOK BOSS	1.9	4.2
TCB	C SIZE TOPLOK BOSS	3.9	8.5
TCB-1	C SIZE TOPLOK BOSS - FLAT	1.9	4.2
TEBA	E SIZE TOPLOK BOSS	0.7	1.6

Shroud pins and bosses



Hinge pin



Toplok pin

Shroud Pins

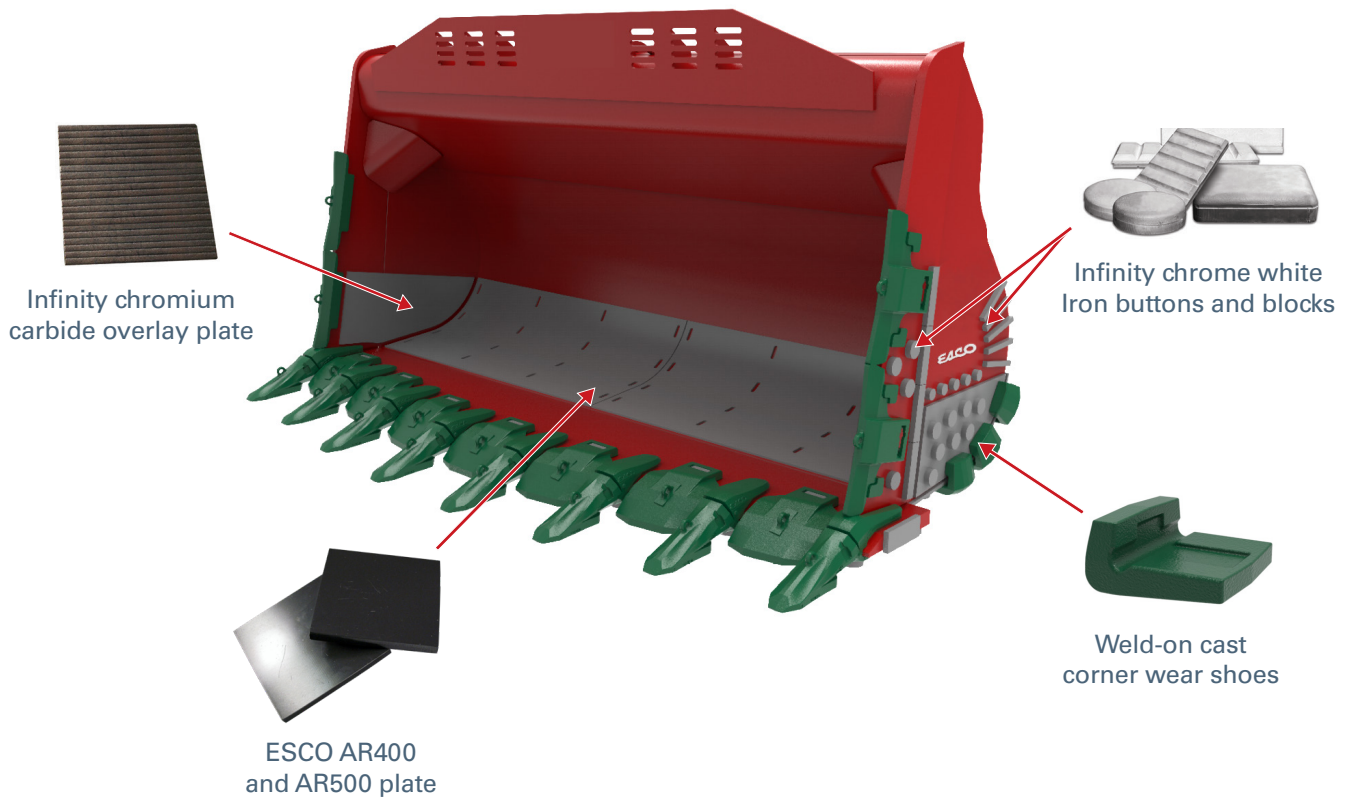
PMID	DESCRIPTION	WEIGHT	
		KG	LBS
TAP	A SIZE TOPLOK PIN	1.0	2.2
TAP-T	A SIZE TOPLOK PIN TAKE-UP	1.1	2.4
TBP	B SIZE TOPLOK PIN	2.3	5.0
TBP-T	B SIZE TOPLOK PIN TAKE-UP	2.6	5.7
TCP	C SIZE TOPLOK PIN	4.8	10.6
TCP-T	C SIZE TOPLOK PIN TAKE-UP	5.3	11.6
TEP	E SIZE TOPLOK PIN	0.6	1.3
TEP-T	E SIZE TOPLOK PIN TAKE-UP	0.7	1.5
HPA-ASSY-2	A SIZE HINGE PIN	0.9	2.0
HPB-ASSY-1A	B SIZE HINGE PIN	2.3	5.0
HPC-ASSY-2A	C SIZE HINGE PIN	4.2	9.2
4269536	A SIZE TWIN BOLT LOCK	1.0	2.2
HPB-SL	B SIZE CENTER BOLT HINGE PIN	2.6	5.8
HPC-SL**	C SIZE CENTER BOLT HINGE PIN**	4.4	9.6
HPC-SL-2	C SIZE CENTER BOLT NEMISYS HINGE PIN	4.1	9.1
HP10	10 SIZE HINGE PIN	1.0	2.3
HP15	15 SIZE HINGE PIN	2.3	5.0
HP20	20 SIZE HINGE PIN	3.9	8.6
HP15-SL	15 SIZE CENTER BOLT HINGE PIN	2.6	5.8

**For earlier ESCO shroud systems.

ESCO wear solutions provide exceptional equipment protection

Mining equipment is subject to extreme abrasion and high-stress gouging that can significantly shorten the service life. It is important to address this with the best available protection – ESCO wear solutions. Up-front action can protect your operation from equipment failure, costly repairs and unplanned downtime.

ESCO offers complete wear protection for all mining-class buckets – from wear components cast in ESCO premium steels to Infinity® bimetallic chrome white iron (CWI) buttons and blocks to abrasion resistant plate.



Contact your ESCO representative for a quote or additional information on ESCO bucket liner kits featuring ESCO AR400 and AR500 abrasion resistant plate, or Infinity® chromium carbide overlay plate.

SECURITY FOR YOUR INVESTMENT

Selecting Kwik-lok® wear protection

Identifying and understanding esco numbering system style...

Designation used to differentiate different sizes or shapes of the same system size (KLB01MB)



Kwik-Lok



B= Base
R = Runner
L = Lock
T =Tool



Designation used to indicate the fit relationship between the base and runner. M stands for Mechanical; A, B, C indicates different sizes.

As simple as 1, 2, 3!

1. Select a System Size for the application, just like you would select a nose size! Use the table at the bottom of the page.
2. Select a Base to fit the mounting surface, just like you would select an adapter! use the table at the bottom of the page.
3. Select a Runner that delivers the best combination of wear material and strength, just like you would select a point!

Step 1 - Select a system size

Example Caterpillar 992 skid plate area

Base Size: 90 ton class machine. Use MB.

Base: Flat mounting surface. Use KLB01MB.

Runner: High abrasion, requires thick runner. Head-on impacts, tough application, requires tapered runner. Use KLR22MB.

Machine Type and Operating Weight* and Size	Exterior Surfaces	Interior Surfaces
Wheel Loader Buckets		
Over 150 tons	MA	MC
150 tons or less	MB	MC
60 tons or less	MC	MC
Face Shovel and Hoe Buckets		
Over 250 tons	MA	MC
250 tons or less	MB	MC
60 tons or less	MC	MC
Dragline Buckets		
Over 14 yds ³	MA	--
14 yds ³ or less	MB	--
Shovel Dipper Buckets		
Over 14 yds ³	MA	MC
14 yds ³ or less	MB	MC
Truck Beds		
	--	MC

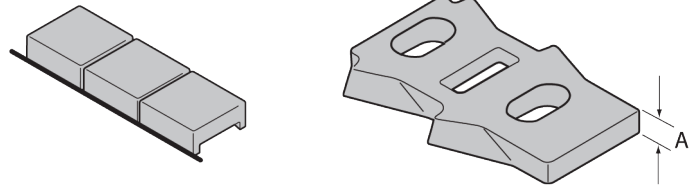
* English tons of operating weight.

Selecting Kwik-lok® wear protection

Step 1 - Select a base

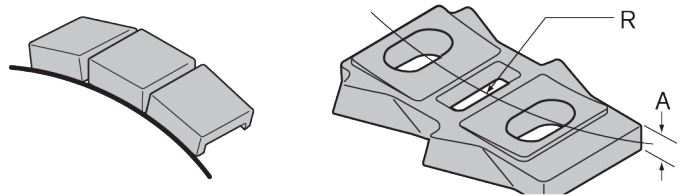
For flat or slightly curved (outside) surfaces use any runners.

- **KLB01MA**
Fits surfaces flat to 120 in (3048 mm) radius
- **KLB01MB**
Fits surfaces flat to 70 in (1778 mm) radius
- **KLB01MC**
Fits surfaces flat to 60 in (1524 mm) radius



Outside curved surfaces. Use general purpose runners only

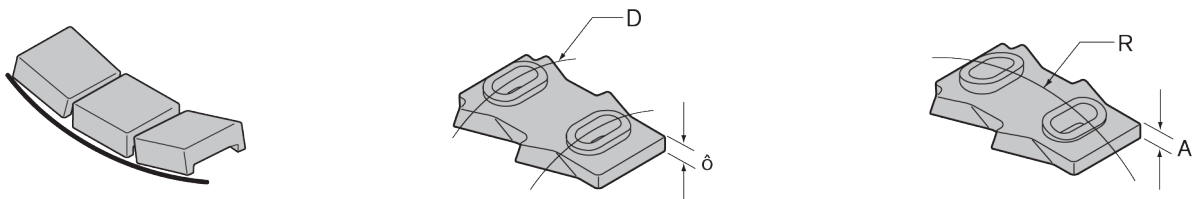
- **KLB01MA**
Fits surfaces 120-45 in (3048-1143 mm) radius
- **KLB01MB**
Fits surfaces 70-35 in (1778-889 mm) radius
- **KLB01MC**
Fits surfaces 60-30 in (1524-762 mm) radius
- **KLB12MB**
Fits surfaces 35-25 in (889-635 mm) radius
- **KLB12MC**
Fits surfaces 30-20 in (762-508 mm) radius



Tip: For ESCO excavator buckets use KLB11MC or KLB11MB.

For inside curved surfaces. Use runners as noted

- **KLB12MC**
(curved across length) Fits surfaces near flat to 100 in (2540 mm) radius: use any runner shown
100-50 in (2540-1270 mm) radius: use general purpose or long runners
50-30 in (1270-762 mm) radius: use general purpose runners
- **KLB12MC**
(curved across width) Fits surfaces near flat to 60 in (1524 mm) radius: use any runner shown
60-30 in (1524-762 mm) radius: use general purpose or long runners



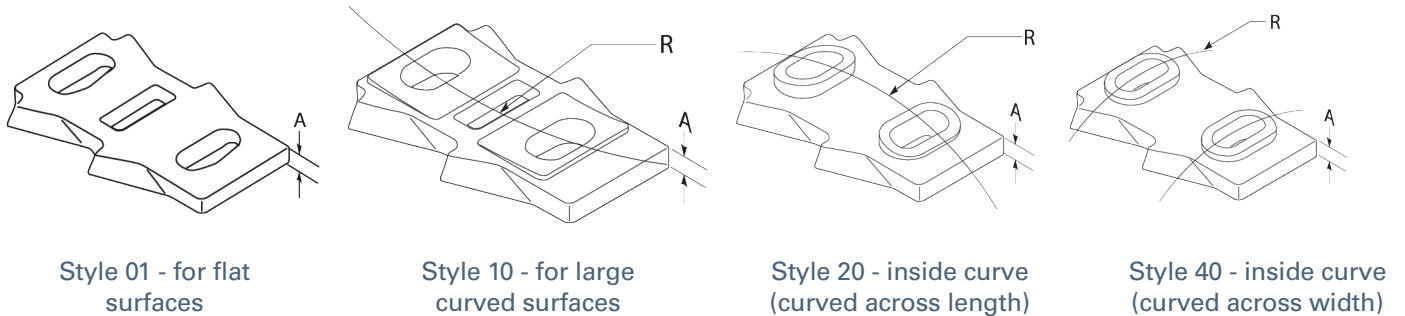
Kwik-lok® II wear runner bases, locks and removal tool

Step 1 - Select a base

For flat or slightly curved (outside) surfaces use any runners.

• KLB01MA

Fits surfaces flat to 3048 mm (120 in) radius



Bases

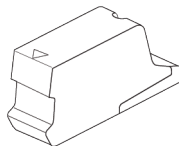
PMID	Size	Style	Base Type	Thickness A		Radius R		Lock PMID	Runner Style	Weight	
				mm	in	mm	in			kg	lb
KLB01MA	MA	01	Flat	38	1.50	--	--	KLL01MA	ALL	13	28
KLB11MA	MA	10	Outside Curve, Large Radius	38	1.50	1524	60	KLL01MA	01	14	30
KLB01MB	MB	01	Flat	25	1.00	--	--	KLL01MB	ALL	6	14
KLB11MB	MB	10	Outside Curve, Large Radius	25	1.00	1270	50	KLL01MB	01	7	15
KLB12MB	MB	10	Outside Curve, Small Radius	25	1.00	762	30	KLL01MB	01	7	15
KLB21MC	MC	20	Inside Curve, Longitudinal	14	0.56	1905	75	KLL01MC	VARIES	3	7
KLB41MC	MC	40	Inside Curve, Lateral	14	0.56	1270	50	KLL01MC	VARIES	3	7
KLB01MC	MC	01	Flat	14	0.56	--	--	KLL01MC	ALL	3	6
KLB11MC	MC	10	Outside Curve, Large Radius	14	0.56	1016	40	KLL01MC	01	3	6
KLB12MC	MC	10	Outside Curve, Small Radius	14	0.56	635	25	KLL01MC	01	3	6

Kwik-Lok II locks

One lock required for each runner and base assembly. Locks are usually reusable when runners are rotated or replaced.

Locks

PMID	Weight	
	kg	lb
KLL01MA	1.2	2.60
KLL01MB	0.5	1.00
KLL01MC	0.2	0.40



Installation and removal tool

Optional tool speeds removal with prying end optimized to penetrate packed fines and engage the lock.

Tool

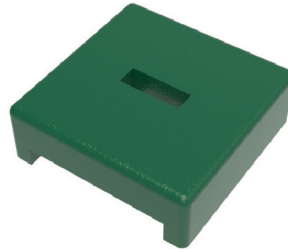
PMID	Weight	
	kg	lb
KLT01	1.9	4.20



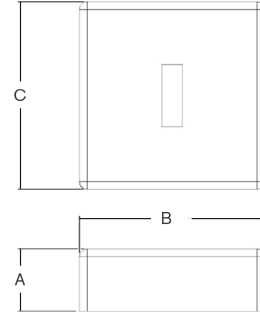
Kwik-lok® II wear runners



General purpose runner



Tapered runner

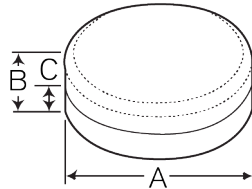


Kwik-Lok Runners

PMID	Size	Style	Description	Thickness A		Length B		Width C		Weight		Lock PMID	Base Size
				mm	in	mm	in	mm	in	kg	lb		
KLR02MA	MA	1	General Purpose	102	4.00	305	12.00	305	12.00	52	114	KLL01MA	MA
KLR01MA	MA	1	General Purpose	76	3.00	305	12.00	305	12.00	35	77	KLL01MA	MA
KLR22MA	MA	20	Tapered	102	4.00	406	16.00	305	12.00	71	157	KLL01MA	MA
KLR21MA	MA	20	Tapered	76	3.00	406	16.00	305	12.00	51	112	KLL01MA	MA
KLR02MB	MB	1	General Purpose	64	2.50	254	10.00	254	10.00	22	48	KLL01MB	MB
KLR01MB	MB	1	General Purpose	44	1.75	254	10.00	254	10.00	13	28	KLL01MB	MB
KLR22MB	MB	20	Tapered	64	2.50	356	14.00	254	10.00	30	67	KLL01MB	MB
KLR02MC	MC	1	General Purpose	38	1.50	203	8.00	203	8.00	8	19	KLL01MC	MC
KLR22MC	MC	20	Tapered	38	1.50	356	14.00	216	8.50	16	35	KLL01MC	MC

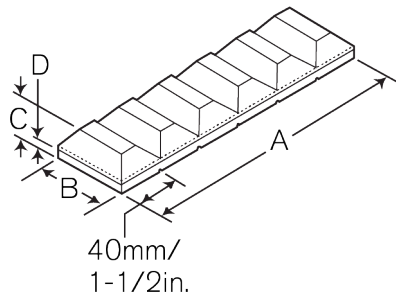
Infinity® chrome white iron (CWI) wear buttons, bars, blocks and runners

Infinity wear buttons, blocks, bars and runners are chrome white iron (CWI) castings attached to a mild steel backing plate. The CWI has a minimum hardness of 700 Brinell. The mild steel backing allows easy attachment with minimal welding. A variety of shapes and sizes are ideal for protection of high wear areas on buckets, conveyor chutes, grizzly screens, crusher liners, or other equipment exposed to abrasive wear.



Wear Buttons

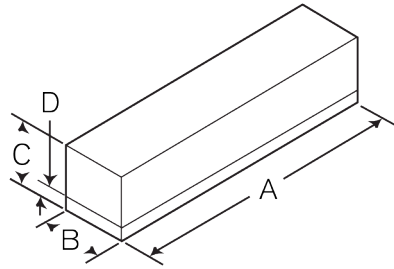
PMID	Diameter A		Thickness B		Base Thickness C		Weight	
	mm	in	mm	in	mm	in	kg	lb
IB50	50	2.00	25	1.00	10	0.38	0.4	0.9
IB75	75	3.00	25	1.00	10	0.38	0.9	2.0
IB90	90	3.50	30	1.19	10	0.38	1.5	3.2
IB115	115	4.50	32	1.25	10	0.38	2.5	5.6
IB150	150	6.00	35	1.38	10	0.38	5.0	10.0



Wear Bars

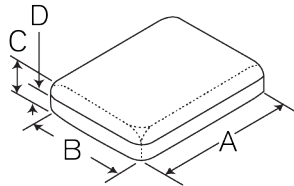
PMID	Length A		Width B		Thickness C		Base Thickness D		Weight	
	mm	in	mm	in	mm	in	mm	in	kg	lb
IBR25	240	9.44	25	1.00	23	0.91	8	0.31	0.4	0.9
IBR38	240	9.44	38	1.50	23	0.91	8	0.31	0.9	2.0
IBR50	240	9.44	50	1.97	23	0.91	8	0.31	1.5	3.2
IBR65	240	9.44	65	2.56	23	0.91	8	0.31	2.5	5.6
IBR90	240	9.44	90	3.54	23	0.91	8	0.31	5.0	10.0
IBR100	240	9.44	100	3.94	23	0.91	8	0.31	4.2	9.2
IBR130	240	9.44	130	5.12	23	0.91	8	0.31	4.9	10.8

Infinity® chrome white iron (CWI) wear buttons, bars, blocks and runners



Wear Blocks

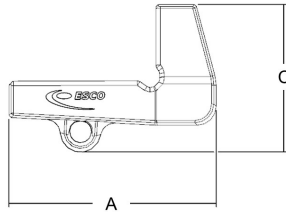
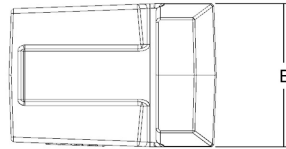
PMID	Length A		Width B		Thickness C		Base Thickness D		Weight	
	mm	in	mm	in	mm	in	mm	in	kg	lb
IBL200	200	8.00	25	1.00	25	1.00	10	0.38	1.0	2.3
IBL300	300	11.75	25	1.00	25	1.00	10	0.38	1.5	3.4
IBL430	430	17.00	50	2.00	50	2.00	10	0.38	8.7	19.2
IBL150-50	150	6.00	50	2.00	50	2.00	10	0.38	3.1	6.8
IBL150-75	150	6.00	75	3.00	75	3.00	10	0.38	4.6	10.2



Wear Runners

PMID	Length A		Width B		Thickness C		Base D		Weight	
	mm	in	mm	in	mm	in	mm	in	kg	lb
IR150	250	10.00	150	6.00	45	1.75	10	0.38	13	29
IR250	250	10.00	250	10.00	48	1.88	13	0.50	23	50

ESCO cast corner wear shoes



Cast Corner Wear Shoes

PMID	Length A		Width B		Height C		Bottom Thickness D		Weight	
	mm	in	mm	in	mm	in	mm	in	kg	lb
CWS38X190-1A	200	7.86	190	7.48	100	3.94	38	1.49	13	29
CWS50X190-1A	275	10.83	190	7.48	196	7.72	50	1.97	28	62
CWS60X250-1A	320	12.60	250	9.84	251	9.88	60	2.36	49	108
CWS100X250-1A	350	13.78	250	9.84	306	12.04	100	3.94	87	192