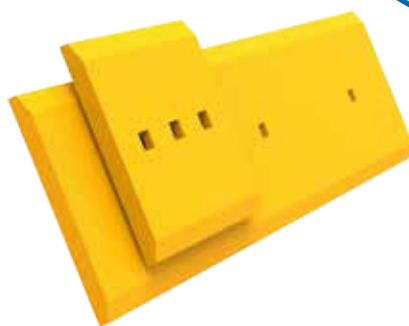




# CUTTING EDGES



### EXTREME PERFORMANCE

MAXIMIZE YOUR PRODUCTION

Hensley offers an extensive line of blades and end bits for all makes and models of dozers. Blades and end bits are fabricated using cast alloy or through-hardened carbon steel to exacting specifications to meet the demanding needs of earth moving applications. With innovative solutions and high quality materials, Hensley blades and accessories are engineered to deliver maximum performance and long lifespan with the lowest cost.

#### ROLLED STEEL HARDNESS RIGHT TO THE CORE

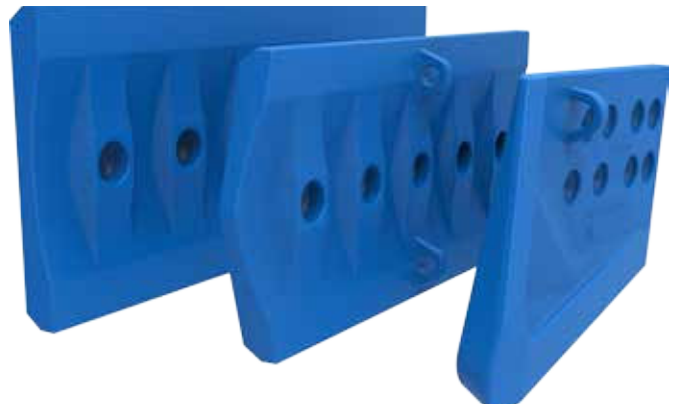
Hensley manufactures a complete line of rolled steel edges and end bits for all makes and models of dozers. All the edges are through-hardened to give the best wear life and protection against breakage in high impact applications.

- ▶ Available standard, heavy duty and extra heavy duty options
- ▶ Edges and end bits help to protect the main blade assembly
- ▶ Through-hardened blades provides long wear life improving productivity
- ▶ Carbide impregnated blades for extreme-abrasion, moderate-impact applications

#### CAST ALLOY SOLUTION FOR TOUGH APPLICATIONS

Hensley manufactures cast alloy dozer edges and end bits for the toughest construction and mining applications. Hensley's 3E alloy steel provides excellent wear characteristic with superior impact resistance.

- ▶ Superior design – added material into the high wear areas
- ▶ Same standard mounting bolt pattern with rolled steel blades
- ▶ Hensley's 3E alloy steel is through-hardened for maximum durability
- ▶ Longer wear life with fewer change outs to lower maintenance costs



*Hensley offers the highest quality hardware for the entire blade line.*

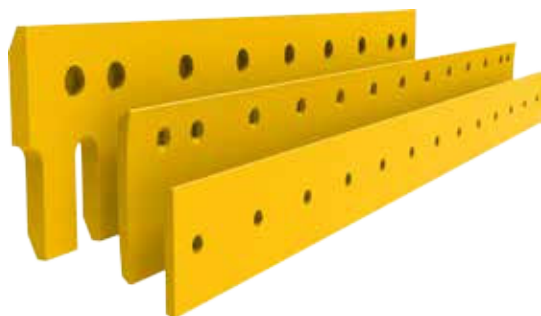
### EXTREME STRENGTH BOOST PRODUCTION

Hensley offers an extensive line of blades and end bits for all makes and models of motor graders. Blades and end bits are fabricated using cast alloy or through-hardened carbon steel to exacting specifications to meet the demanding needs of earth moving applications. High carbon steel is used to manufacture grader blades for general applications where the low cost solution is required. With innovative solutions and high quality materials, Hensley blades and accessories are engineered to deliver maximum performance and long lifespan with the lowest cost.

### ROLLED STEEL HIGH QUALITY, EXTREME DURABILITY

Hensley manufactures a complete line of rolled steel grader cutting edges and end bits for all grader models. Hensley's first-class quality process, guarantees the best value for the customer.

- ▷ Double beveled curved, flat and serrated edges
- ▷ End bits and overlay bits help to protect the moldboard
- ▷ High-carbon grader blades for the low / medium-abrasion, low-impact applications
- ▷ Through-hardened blades for high-abrasion application



### CAST ALLOY SOLUTION FOR TOUGH APPLICATIONS

Hensley produces cast alloy grader blades for highway, heavy construction, aggregate and mining applications. Hensley's 3E alloy steel provides excellent wear characteristic with superior impact resistance.

- ▷ Flat and serrated edges
- ▷ Same standard mounting bolt pattern with rolled steel blades
- ▷ Hensley's 3E alloy steel is through-hardened for maximum durability
- ▷ Long wear life with fewer change outs to lower maintenance costs



*Hensley offers the highest quality hardware for the entire blade line.*

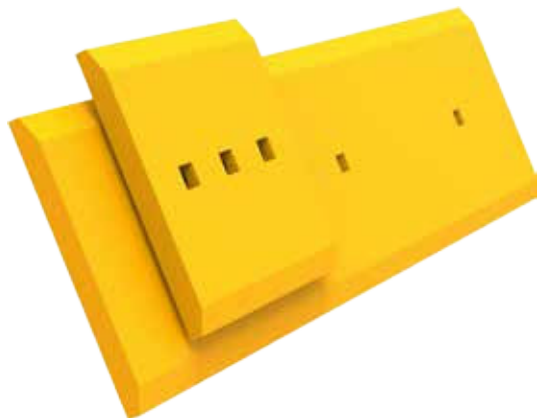
## EXTREME ENDURANCE BUILT TO STAND UP TO THE APPLICATION

Hensley offers an extensive line of half-arrow segments, top covers, base edges, cutting edges and wear plates for all makes and models of wheel loaders. Top covers and wear plates are fabricated using cast alloy; base edges and cutting edges are through hardened carbon steel. Half-arrows are available in both cast alloy and through hardened carbon steel. All loader blades are made to exacting specifications to meet the demanding needs of earth moving applications. With innovative solutions and high quality materials, Hensley blades and accessories are engineered to deliver maximum performance and a long lifespan with the lowest cost.

### ROLLED STEEL HARDNESS RIGHT TO THE CORE

Every manufacturer has unique bolt pattern for their loader edges. Hensley manufactures OEM, aftermarket and custom design rolled steel loader edges to fulfil the customer requirements. All of the edges are through hardened to give the best wear life and protection against breakage in high impact applications.

- ▶ Base edges, half arrow edges and bolt on cutting edges
- ▶ Edges help to improve penetration and protect the main edge of the bucket
- ▶ Through-hardened blades provides long wear life improving productivity
- ▶ Carbide impregnated blades for extreme-abrasion, moderate-impact applications



### CAST ALLOY SOLUTION FOR TOUGH APPLICATIONS

Hensley manufactures cast alloy loader edges and segments for the toughest construction and mining applications. Hensley's 3E alloy steel provides excellent wear characteristic with superior impact resistance.

- ▶ Half arrow edges and segments, wear plates and top covers
- ▶ Superior design – added material into the high wear areas
- ▶ Improved bucket penetration and optimized material flow
- ▶ Hensley's 3E alloy steel is through-hardened for maximum durability
- ▶ Long wear life with fewer change outs to lower maintenance costs



*Hensley offers the highest quality hardware for the entire blade line.*

### **EXTREME DURABILITY** **HARDNESS RIGHT TO THE CORE**

Hensley offers a Tungsten Carbide Matrix (TCM) overlay to improve the wear life of the cutting edges that are used in high abrasive and low/medium impact applications. TCM pattern is designed based on the customers' preferences providing customized wear protection for every application. The most common applications are unimproved earthen material roads, public sand and gravel roads and mining or logging haul roads.

### **TUNGSTEN CARBIDE MATRIX** **LONGER WEAR, FEWER BLADE CHANGES**

Hensley offers a Tungsten Carbide Matrix (TCM) overlay to improve the wear life of the cutting edges that are used in high abrasive and low/medium impact applications.

- ▷ Grader blades, loader blades, dozer blades and end bits
- ▷ Custom pattern for your application
- ▷ High abrasion and low or medium impact applications



*Hensley offers the highest quality hardware for the entire blade line.*



## **HIGH PERFORMANCE**

**HIGHLY WEAR RESISTANT**

Hensley offers an extensive line of special blades for a variety of machine makes and models. The snow plow blade selection includes carbon, heat treated, and different carbide inserted blades providing the customer with the best solution for their application. Grader pick blades with rotating or fixed tips offer an economical wear resistant solution for dirt and gravel road maintenance or hard surface removal applications.

### **SNOW BLADES**

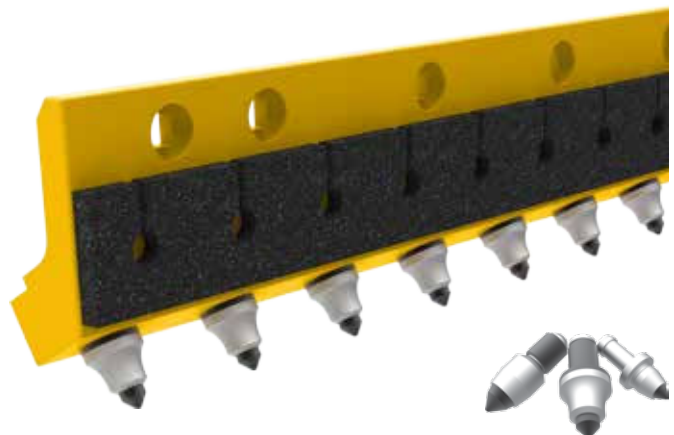
**LONGER WEAR**

Hensley snow plow blades provide the extreme in wear resistance at the low cost. There is a wide selection of standard snow plow blades and hardware for a variety of machine makes and models. The snow plow blades selection includes carbon, heat treated and different carbide inserted blades so the customer will find the best possible solution for their application. Standard Highway Punch (3-3-12 spacing) is the most common bolt pattern, but other hole patterns are available by customer request. Plow blades come with countersunk holes for plow bolts and square punched holes for carriage bolts.

### **GRADER PICK BLADES**

**QUICK, EASY MAINTENANCE**

Thru hardened, heat treated blades with replaceable carbide tips offer the best performance and are available in different sizes to suit all sizes of OEM machines. A variety of rotating and fixed (non-rotating) tips are available to tailor this product to any application. The pick system is ideal for dirt and gravel road maintenance, hard-packed snow and ice removal, chip and seal road reclamation, oil sand road reclamation, spot asphalt milling and loose material.



*Optional Picks*

*Hensley offers the highest quality hardware for the entire blade line.*



### **EXTREME STRENGTH**

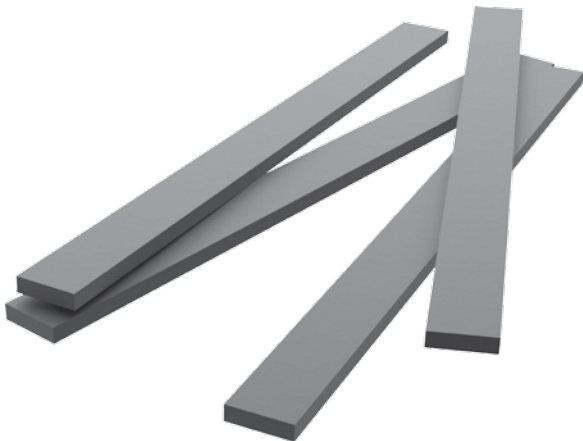
**HIGH PERFORMANCE, LASTING VALUE**

Hensley offers a wide variety of wear bars and grouser bars. Wear and grouser bars are through hardened to 500 Brinell, being extremely shock and wear resistant. Their special design will ensure easy, quick and economical welding capabilities.

### **WEAR BARS**

**PROTECTING YOUR INVESTMENT**

All wear bars are made from high quality steel and are completely through hardened to 500 Brinell having the optimal combination of hardness, abrasion resistance and toughness. Wear bars are used as protection on buckets, in crushers, in dump truck bodies, and in a broad range of other applications where impact and wear protection is required. To top off all of these benefits, our customers typically report that Hensley wear bars are even more “welding friendly” than most competitive bar alternatives, even those of significantly lower material grade.



### **GROUSER BARS**

**HARDNESS RIGHT TO THE CORE**

Hensley Grouser Bars are 500 HB quality, extremely shock and wear resistant; providing the optimum solution for crawler tractors working on hard and abrasive rock surfaces. Their special design will ensure quick, easy, and economical welding and provide superior penetration capabilities; restoring traction and improving fuel economy. Grouser Bars are available in the length of 3 meters (10 feet) and can be cut to requested size upon request.





Since 1947, Hensley Industries, Inc. has dedicated itself to providing superior products and service across the globe.

Hensley's continuous commitment to safety, quality, reliability and our customers enables us to help those in the field every day.

**HENSLEY INDUSTRIES, INC.**

2108 Joe Field Road  
Dallas, Texas 75229 USA

**CUSTOMER SERVICE**

USA/Canada [888] 406-6262  
International +1 [972] 406-6262

**[www.HENSLEYIND.com](http://www.HENSLEYIND.com)**



Safety First! Hensley Industries, Inc. recommends following all safety protocols when using our products and utilizing all PPE.

©2017 Hensley Industries, Inc. This publication is protected under the copyright laws of the United States. Unauthorized duplication or distribution is prohibited.

**CE-01-020917**